

## Product datasheet for **TA803463S**

### ETV7 Mouse Monoclonal Antibody [Clone ID: OTI2A10]

#### Product data:

Product Type:	Primary Antibodies
Clone Name:	OTI2A10
Applications:	WB
Recommended Dilution:	WB 1:2000
Reactivity:	Human
Host:	Mouse
Isotype:	IgG1
Clonality:	Monoclonal
Immunogen:	Human recombinant protein fragment corresponding to amino acids 90-341 of human ETV7 (NP_057219) produced in E.coli.
Formulation:	PBS (pH 7.3) containing 1% BSA, 50% glycerol and 0.02% sodium azide.
Concentration:	1 mg/ml
Purification:	Purified from mouse ascites fluids or tissue culture supernatant by affinity chromatography (protein A/G)
Conjugation:	Unconjugated
Storage:	Store at -20°C as received.
Stability:	Stable for 12 months from date of receipt.
Predicted Protein Size:	38.8 kDa
Gene Name:	ETS variant 7
Database Link:	<a href="#">NP_057219</a> <a href="#">Entrez Gene 51513 Human</a> <a href="#">Q9Y603</a>
Background:	The protein encoded by this gene belongs to the ETS family of transcription factors, which is a large group of evolutionarily conserved transcriptional regulators that play an important role in a variety of cellular processes throughout development and differentiation, and are involved in oncogenesis as well. This protein is predominantly expressed in hematopoietic tissues. Several alternatively spliced transcript variants encoding different isoforms have been described for this gene (PMID:11108721). [provided by RefSeq, May 2011]

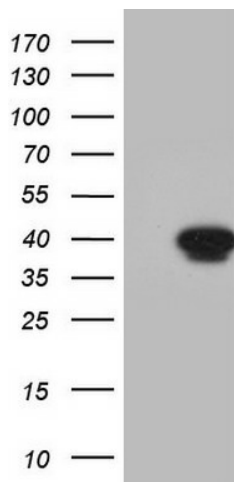


[View online »](#)

**Synonyms:** TEL-2; TEL2; TELB

**Protein Families:** Druggable Genome, Transcription Factors

**Protein Pathways:** Dorso-ventral axis formation

**Product images:**

HEK293T cells were transfected with the pCMV6-ENTRY control (Cat# [PS100001], Left lane) or pCMV6-ENTRY ETV7 (Cat# [RC207742], Right lane) cDNA for 48 hrs and lysed. Equivalent amounts of cell lysates (5 ug per lane) were separated by SDS-PAGE and immunoblotted with anti-ETV7 (Cat# [TA803463]). Positive lysates [LY414164] (100ug) and [LC414164] (20ug) can be purchased separately from OriGene.