

## Product datasheet for **TA803455M**

### CHCHD3 Mouse Monoclonal Antibody [Clone ID: OTI7G4]

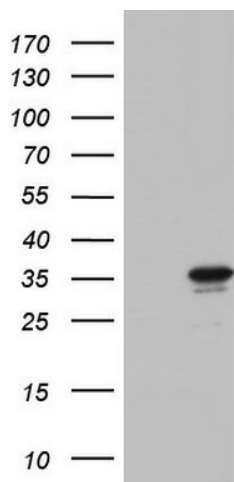
#### Product data:

Product Type:	Primary Antibodies
Clone Name:	OTI7G4
Applications:	IHC, WB
Recommended Dilution:	WB 1:2000
Reactivity:	Human, Mouse, Rat
Host:	Mouse
Isotype:	IgG1
Clonality:	Monoclonal
Immunogen:	Human recombinant protein fragment corresponding to amino acids 2-227 of human CHCHD3 (NP_060282) produced in E.coli.
Formulation:	PBS (pH 7.3) containing 1% BSA, 50% glycerol and 0.02% sodium azide.
Concentration:	1 mg/ml
Purification:	Purified from mouse ascites fluids or tissue culture supernatant by affinity chromatography (protein A/G)
Conjugation:	Unconjugated
Storage:	Store at -20°C as received.
Stability:	Stable for 12 months from date of receipt.
Gene Name:	coiled-coil-helix-coiled-coil-helix domain containing 3
Database Link:	<a href="#">NP_060282</a> <a href="#">Entrez Gene 66075 Mouse</a> <a href="#">Entrez Gene 296966 Rat</a> <a href="#">Entrez Gene 54927 Human</a> <a href="#">Q9NX63</a>
Synonyms:	MINOS3; PPP1R22

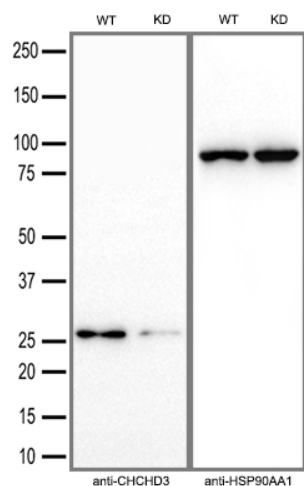


[View online »](#)

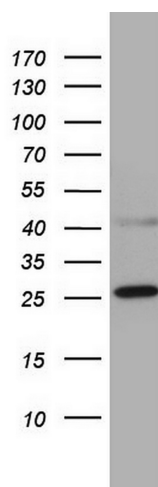
## Product images:



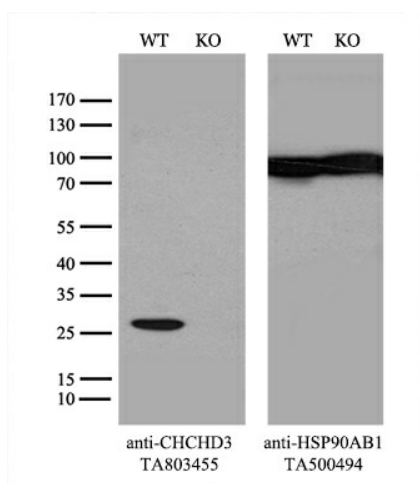
HEK293T cells were transfected with the pCMV6-ENTRY control (Cat# [PS100001], Left lane) or pCMV6-ENTRY CHCHD3 (Cat# [RC200174], Right lane) cDNA for 48 hrs and lysed. Equivalent amounts of cell lysates (5 ug per lane) were separated by SDS-PAGE and immunoblotted with anti-CHCHD3 (Cat# [TA803455]). Positive lysates [LY413521] (100ug) and [LC413521] (20ug) can be purchased separately from OriGene.



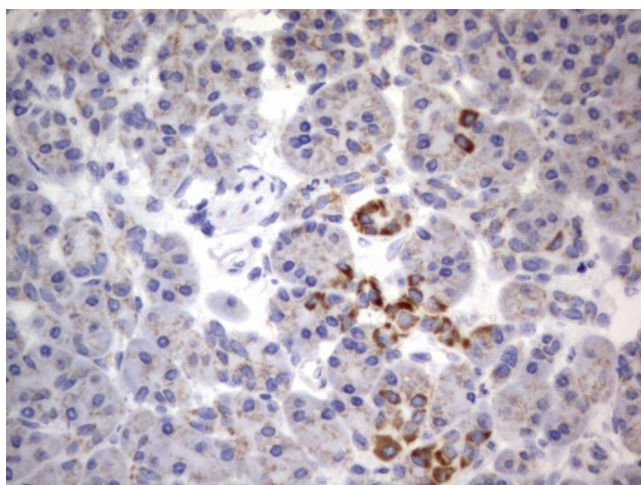
Equivalent amounts of cell lysates (30 ug per lane) of wild-type HeLa cells (WT) and CHCHD3-Knockdown HeLa cells (KD) were separated by SDS-PAGE and immunoblotted with anti-CHCHD3 monoclonal antibody [TA803455] (1:5000). Then the blotted membrane was stripped and reprobed with anti-HSP90AA1 antibody as a loading control.



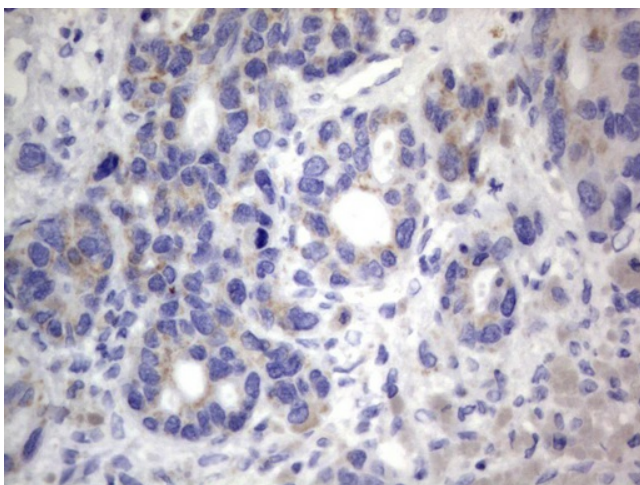
Western blot analysis of A549 cell lysate (35ug) by using anti-CHCHD3 monoclonal antibody.  
Dilution: 1:500



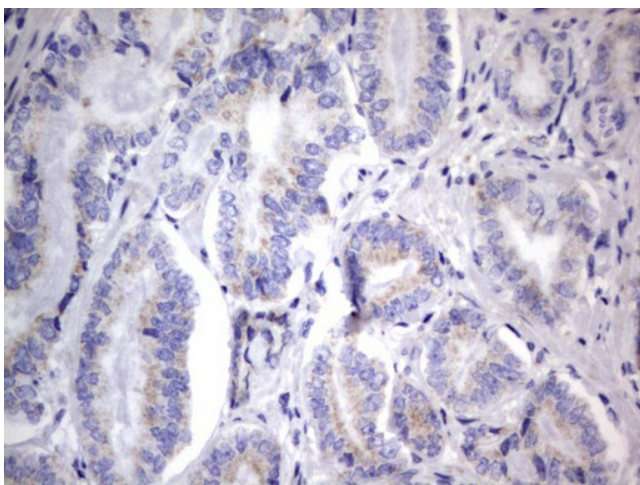
Equivalent amounts of cell lysates (10 ug per lane) of wild-type 293T cells (WT, Cat# LC810293T) and CHCHD3-Knockout 293T cells (KO, Cat# LC810987) were separated by SDS-PAGE and immunoblotted with anti-CHCHD3 monoclonal antibody [TA803455], (1:500). Then the blotted membrane was stripped and reprobed with anti-HSP90AB1 antibody ([TA500494]) as a loading control.



Immunohistochemical staining of paraffin-embedded Human pancreas tissue within the normal limits using anti-CHCHD3 mouse monoclonal antibody. ([TA803455]) Dilution: 1:150. Heat-induced epitope retrieval by EDTA solution buffer pH 8.0 at 120°C for 3 min.



Immunohistochemical staining of paraffin-embedded Carcinoma of Human pancreas tissue using anti-CHCHD3 mouse monoclonal antibody. ([TA803455]) Dilution: 1:150. Heat-induced epitope retrieval by EDTA solution buffer pH 8.0 at 120°C for 3 min.



Immunohistochemical staining of paraffin-embedded Human prostate tissue within the normal limits using anti-CHCHD3 mouse monoclonal antibody. ([TA803455]) Dilution: 1:150. Heat-induced epitope retrieval by EDTA solution buffer pH 8.0 at 120°C for 3 min.