

## Product datasheet for **TA803454S**

### CHCHD3 Mouse Monoclonal Antibody [Clone ID: OTI2A6]

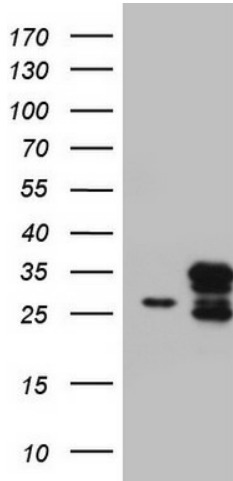
#### Product data:

Product Type:	Primary Antibodies
Clone Name:	OTI2A6
Applications:	IHC, WB
Recommended Dilution:	WB 1:2000, IHC 1:150
Reactivity:	Human, Mouse, Rat
Host:	Mouse
Isotype:	IgG1
Clonality:	Monoclonal
Immunogen:	Human recombinant protein fragment corresponding to amino acids 2-227 of human CHCHD3 (NP_060282) produced in E.coli.
Formulation:	PBS (pH 7.3) containing 1% BSA, 50% glycerol and 0.02% sodium azide.
Concentration:	1 mg/ml
Purification:	Purified from mouse ascites fluids or tissue culture supernatant by affinity chromatography (protein A/G)
Conjugation:	Unconjugated
Storage:	Store at -20°C as received.
Stability:	Stable for 12 months from date of receipt.
Predicted Protein Size:	26 kDa
Gene Name:	coiled-coil-helix-coiled-coil-helix domain containing 3
Database Link:	<a href="#">NP_060282</a> <a href="#">Entrez Gene 66075 Mouse</a> <a href="#">Entrez Gene 296966 Rat</a> <a href="#">Entrez Gene 54927 Human</a> <a href="#">Q9NX63</a>
Synonyms:	MINOS3; PPP1R22

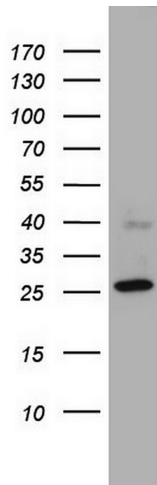


[View online »](#)

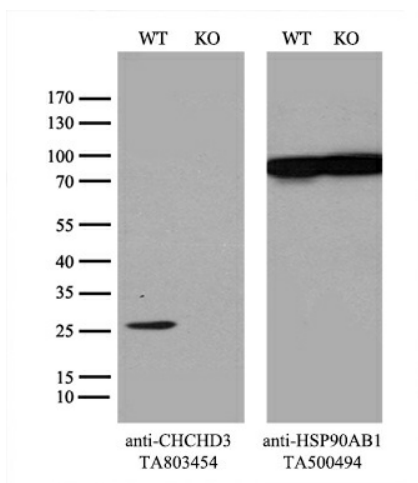
**Product images:**



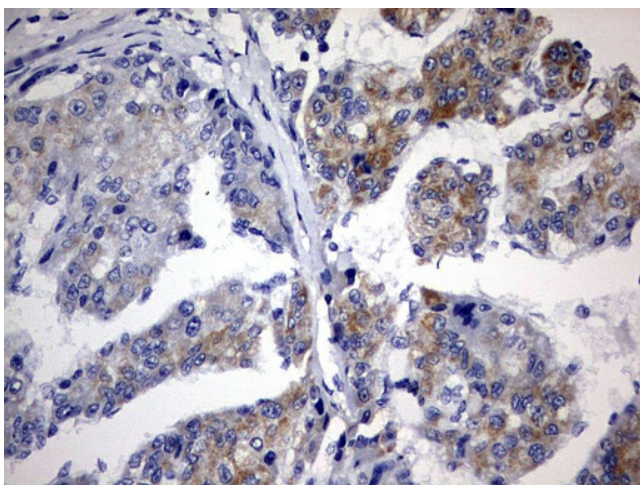
HEK293T cells were transfected with the pCMV6-ENTRY control (Left lane) or pCMV6-ENTRY CHCHD3 ([RC200174], Right lane) cDNA for 48 hrs and lysed. Equivalent amounts of cell lysates (5 ug per lane) were separated by SDS-PAGE and immunoblotted with anti-CHCHD3. Positive lysates [LY413521] (100ug) and [LC413521] (20ug) can be purchased separately from OriGene.



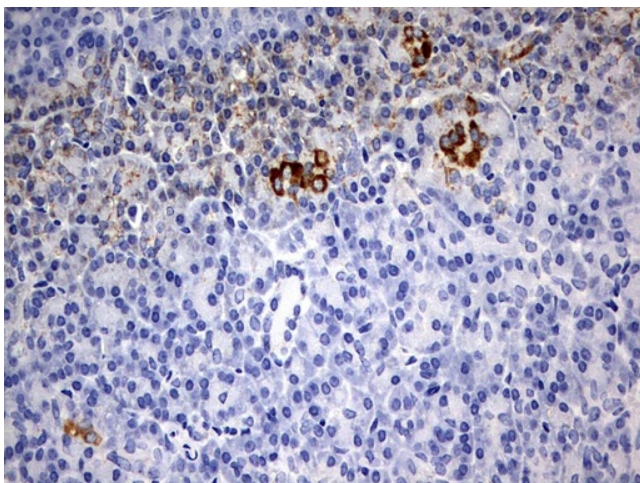
Western blot analysis of A549 cell lysate (35ug) by using anti-CHCHD3 monoclonal antibody. Dilution: 1:500



Equivalent amounts of cell lysates (10 ug per lane) of wild-type 293T cells (WT, Cat# LC810293T) and CHCHD3-Knockout 293T cells (KO, Cat# [LC810987]) were separated by SDS-PAGE and immunoblotted with anti-CHCHD3 monoclonal antibody [TA803454], (1:500). Then the blotted membrane was stripped and reprobred with anti-HSP90AB1 antibody ([TA500494]) as a loading control.



Immunohistochemical staining of paraffin-embedded Carcinoma of Human liver tissue using anti-CHCHD3 mouse monoclonal antibody. (Heat-induced epitope retrieval by 10mM citric buffer, pH6.0, 120°C for 3min, [TA803454])



Immunohistochemical staining of paraffin-embedded Human pancreas tissue within the normal limits using anti-CHCHD3 mouse monoclonal antibody. (Heat-induced epitope retrieval by 10mM citric buffer, pH6.0, 120°C for 3min, [TA803454])