

Product datasheet for **TA803436BM**

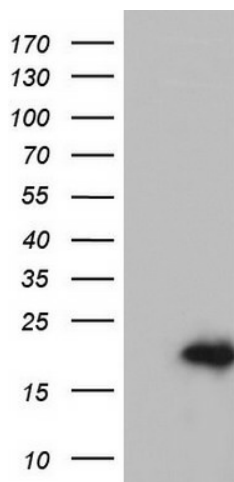
p23 (PTGES3) Mouse Monoclonal Antibody (HRP conjugated) [Clone ID: OTI2H10]

Product data:

Product Type:	Primary Antibodies
Clone Name:	OTI2H10
Applications:	WB
Recommended Dilution:	WB 1:2000
Reactivity:	Human, Mouse, Rat
Host:	Mouse
Isotype:	IgG2a
Clonality:	Monoclonal
Immunogen:	Full length human recombinant protein of human PTGES3 (NP_006592) produced in E.coli.
Formulation:	PBS (pH 7.3) containing 1% BSA, 50% glycerol.
Concentration:	0.5 mg/ml
Purification:	Purified from mouse ascites fluids or tissue culture supernatant by affinity chromatography (protein A/G)
Conjugation:	HRP
Storage:	Store at -20°C as received.
Stability:	Stable for 12 months from date of receipt.
Predicted Protein Size:	18.5 kDa
Gene Name:	prostaglandin E synthase 3
Database Link:	NP_006592 Entrez Gene 56351 Mouse Entrez Gene 362809 Rat Entrez Gene 10728 Human Q15185
Synonyms:	cPGES; P23; TEBP
Protein Families:	Druggable Genome, Nuclear Hormone Receptor



[View online »](#)

Product images:

HEK293T cells were transfected with the pCMV6-ENTRY control (Left lane) or pCMV6-ENTRY PTGES3 ([RC201254], Right lane) cDNA for 48 hrs and lysed. Equivalent amounts of cell lysates (5 ug per lane) were separated by SDS-PAGE and immunoblotted with anti-PTGES3. Positive lysates [LY401975] (100ug) and [LC401975] (20ug) can be purchased separately from OriGene.