

Product datasheet for **TA803433**

p23 (PTGES3) Mouse Monoclonal Antibody [Clone ID: OTI2D2]

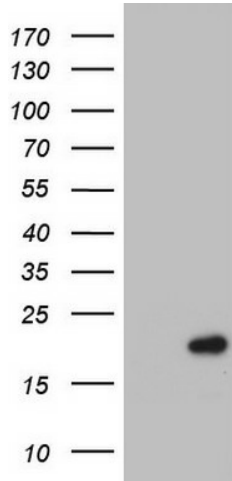
Product data:

Product Type:	Primary Antibodies
Clone Name:	OTI2D2
Applications:	IHC, WB
Recommended Dilution:	WB 1:2000, IHC 1:150
Reactivity:	Human, Mouse, Rat
Host:	Mouse
Isotype:	IgG1
Clonality:	Monoclonal
Immunogen:	Full length human recombinant protein of human PTGES3 (NP_006592) produced in E.coli.
Formulation:	PBS (pH 7.3) containing 1% BSA, 50% glycerol and 0.02% sodium azide.
Concentration:	1 mg/ml
Purification:	Purified from mouse ascites fluids or tissue culture supernatant by affinity chromatography (protein A/G)
Conjugation:	Unconjugated
Storage:	Store at -20°C as received.
Stability:	Stable for 12 months from date of receipt.
Predicted Protein Size:	18.5 kDa
Gene Name:	prostaglandin E synthase 3
Database Link:	NP_006592 Entrez Gene 56351 Mouse Entrez Gene 362809 Rat Entrez Gene 10728 Human Q15185
Synonyms:	cPGES; P23; TEBP
Protein Families:	Druggable Genome, Nuclear Hormone Receptor

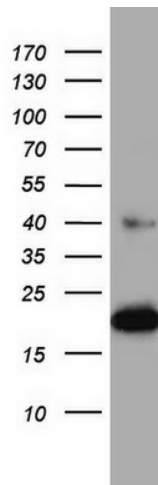


[View online »](#)

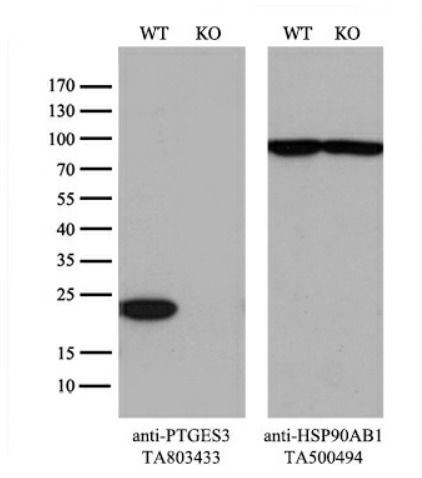
Product images:



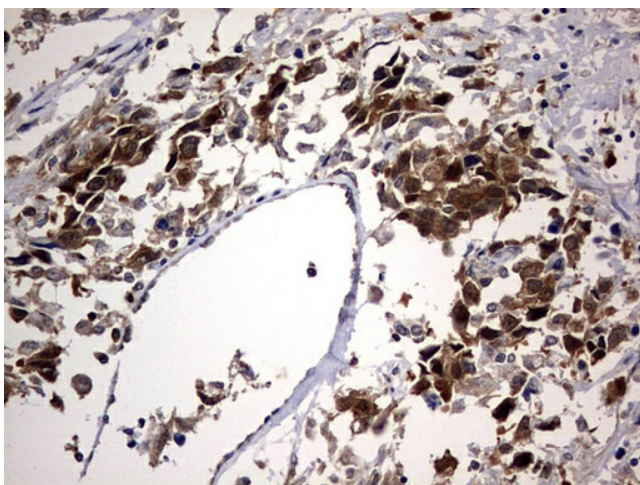
HEK293T cells were transfected with the pCMV6-ENTRY control (Cat# [PS100001], Left lane) or pCMV6-ENTRY PTGES3 (Cat# [RC201254], Right lane) cDNA for 48 hrs and lysed. Equivalent amounts of cell lysates (5 ug per lane) were separated by SDS-PAGE and immunoblotted with anti-PTGES3 (Cat# TA803433). Positive lysates [LY401975] (100ug) and [LC401975] (20ug) can be purchased separately from OriGene.



Western blot analysis of A549 cell lysate (35ug) by using anti-PTGES3 monoclonal antibody. Dilution: 1:500



Equivalent amounts of cell lysates (10 ug per lane) of wild-type 293T cells (WT, Cat# LC810293T) and PTGES3-Knockout 293T cells (KO, Cat# [LC811134]) were separated by SDS-PAGE and immunoblotted with anti-PTGES3 monoclonal antibody TA803433, (1:500). Then the blotted membrane was stripped and reprobed with anti-HSP90AB1 antibody ([TA500494]) as a loading control.



Immunohistochemical staining of paraffin-embedded Adenocarcinoma of Human ovary tissue using anti-PTGES3 mouse monoclonal antibody. (Heat-induced epitope retrieval by 10mM citric buffer, pH6.0, 120°C for 3min, TA803433)