

## Product datasheet for **TA803430M**

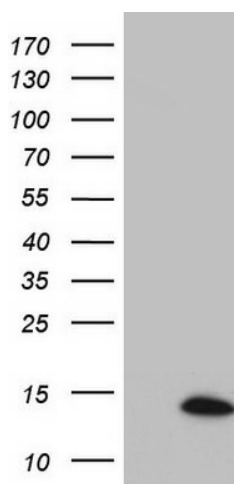
### Suppressor of Ty 4 homolog 1 (SUPT4H1) Mouse Monoclonal Antibody [Clone ID: OTI6B10]

#### Product data:

Product Type:	Primary Antibodies
Clone Name:	OTI6B10
Applications:	WB
Recommended Dilution:	WB 1:500
Reactivity:	Human, Mouse, Rat
Host:	Mouse
Isotype:	IgG1
Clonality:	Monoclonal
Immunogen:	Full length human recombinant protein of human SUPT4H1 (NP_003159) produced in E.coli.
Formulation:	PBS (pH 7.3) containing 1% BSA, 50% glycerol and 0.02% sodium azide.
Concentration:	1 mg/ml
Purification:	Purified from mouse ascites fluids or tissue culture supernatant by affinity chromatography (protein A/G)
Conjugation:	Unconjugated
Storage:	Store at -20°C as received.
Stability:	Stable for 12 months from date of receipt.
Predicted Protein Size:	13 kDa
Gene Name:	SPT4 homolog, DSIF elongation factor subunit
Database Link:	<a href="#">NP_003159</a> <a href="#">Entrez Gene 287608 Rat</a> <a href="#">Entrez Gene 6827 Human</a> <a href="#">P63272</a>
Synonyms:	SPT4; SPT4H; Supt4a; SUPT4H
Protein Families:	Transcription Factors

[View online »](#)

## Product images:



HEK293T cells were transfected with the pCMV6-ENTRY control (Left lane) or pCMV6-ENTRY SUPT4H1 ([RC201211], Right lane) cDNA for 48 hrs and lysed. Equivalent amounts of cell lysates (5 ug per lane) were separated by SDS-PAGE and immunoblotted with anti-SUPT4H1. Positive lysates [LY418857] (100ug) and [LC418857] (20ug) can be purchased separately from OriGene.