

## Product datasheet for **TA803428BM**

### **C11ORF67 (AAMDC) Mouse Monoclonal Antibody (HRP conjugated) [Clone ID: OTI1H5]**

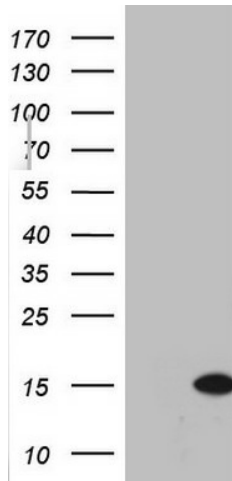
#### **Product data:**

Product Type:	Primary Antibodies
Clone Name:	OTI1H5
Applications:	WB
Recommended Dilution:	WB 1:2000
Reactivity:	Human, Mouse, Rat
Host:	Mouse
Isotype:	IgG1
Clonality:	Monoclonal
Immunogen:	Full length human recombinant protein of human C11orf67(NP_078960) produced in E.coli.
Formulation:	PBS (pH 7.3) containing 1% BSA, 50% glycerol.
Concentration:	0.5 mg/ml
Purification:	Purified from mouse ascites fluids or tissue culture supernatant by affinity chromatography (protein A/G)
Conjugation:	HRP
Storage:	Store at -20°C as received.
Stability:	Stable for 12 months from date of receipt.
Predicted Protein Size:	13.2 kDa
Gene Name:	adipogenesis associated, Mth938 domain containing
Database Link:	<a href="#">NP_078960</a> <a href="#">Entrez Gene 66273 Mouse</a> <a href="#">Entrez Gene 361606 Rat</a> <a href="#">Entrez Gene 28971 Human</a> <a href="#">Q9H7C9</a>
Synonyms:	C11orf67; CK067; PTD015



[View online »](#)

## Product images:



HEK293T cells were transfected with the pCMV6-ENTRY control (Left lane) or pCMV6-ENTRY C11orf67 ([RC201033], Right lane) cDNA for 48 hrs and lysed. Equivalent amounts of cell lysates (5 ug per lane) were separated by SDS-PAGE and immunoblotted with anti-C11orf67. Positive lysates [LY411144] (100ug) and [LC411144] (20ug) can be purchased separately from OriGene.