

Product datasheet for **TA803402AM**

bcl 6 (BCL6) Mouse Monoclonal Antibody (Biotin conjugated) [Clone ID: OTI6C7]

Product data:

Product Type:	Primary Antibodies
Clone Name:	OTI6C7
Applications:	WB
Recommended Dilution:	WB 1:2000
Reactivity:	Human, Mouse, Rat
Host:	Mouse
Isotype:	IgG1
Clonality:	Monoclonal
Immunogen:	Human recombinant protein fragment corresponding to amino acids 1-300 of human BCL6 (NP_001697) produced in E.coli.
Formulation:	PBS (pH 7.3) containing 1% BSA, 50% glycerol and 0.02% sodium azide.
Concentration:	0.5 mg/ml
Purification:	Purified from mouse ascites fluids or tissue culture supernatant by affinity chromatography (protein A/G)
Conjugation:	Biotin
Storage:	Store at -20°C as received.
Stability:	Stable for 12 months from date of receipt.
Predicted Protein Size:	78.7 kDa
Gene Name:	B-cell CLL/lymphoma 6
Database Link:	NP_001697 Entrez Gene 12053 Mouse Entrez Gene 303836 Rat Entrez Gene 604 Human P41182



[View online »](#)

Background:

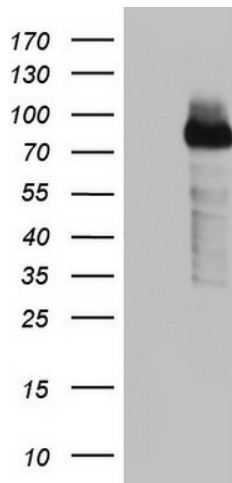
The protein encoded by this gene is a zinc finger transcription factor and contains an N-terminal POZ domain. This protein acts as a sequence-specific repressor of transcription, and has been shown to modulate the transcription of START-dependent IL-4 responses of B cells. This protein can interact with a variety of POZ-containing proteins that function as transcription corepressors. This gene is found to be frequently translocated and hypermutated in diffuse large-cell lymphoma (DLCL), and may be involved in the pathogenesis of DLCL. Alternatively spliced transcript variants encoding different protein isoforms have been found for this gene. [provided by RefSeq, Sep 2008]

Synonyms:

BCL5; BCL6A; LAZ3; ZBTB27; ZNF51

Protein Families:

Druggable Genome, Transcription Factors

Product images:

HEK293T cells were transfected with the pCMV6-ENTRY control (Cat# [PS100001], Left lane) or pCMV6-ENTRY BCL6 (Cat# [RC219007], Right lane) cDNA for 48 hrs and lysed. Equivalent amounts of cell lysates (5 ug per lane) were separated by SDS-PAGE and immunoblotted with anti-BCL6 (Cat# [TA803402]). Positive lysates [LY400639] (100ug) and [LC400639] (20ug) can be purchased separately from OriGene.