

## Product datasheet for **TA803382BM**

### ZNF286 (ZNF286A) Mouse Monoclonal Antibody (HRP conjugated) [Clone ID: OTI2D1]

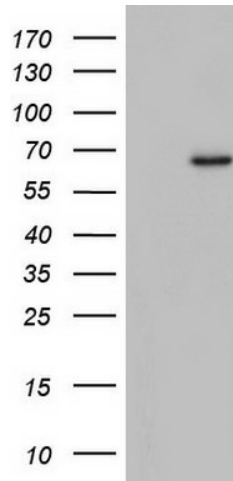
#### Product data:

Product Type:	Primary Antibodies
Clone Name:	OTI2D1
Applications:	WB
Recommended Dilution:	WB 1:2000
Reactivity:	Human
Host:	Mouse
Isotype:	IgG1
Clonality:	Monoclonal
Immunogen:	Human recombinant protein fragment corresponding to amino acids 1-252 of human ZNF286A (NP_065703) produced in E.coli.
Formulation:	PBS (pH 7.3) containing 1% BSA, 50% glycerol.
Concentration:	0.5 mg/ml
Purification:	Purified from mouse ascites fluids or tissue culture supernatant by affinity chromatography (protein A/G)
Conjugation:	HRP
Storage:	Store at -20°C as received.
Stability:	Stable for 12 months from date of receipt.
Predicted Protein Size:	60 kDa
Gene Name:	zinc finger protein 286A
Database Link:	<a href="#">NP_065703</a> <a href="#">Entrez Gene 57335 Human</a> <a href="#">Q9HBT8</a>
Synonyms:	ZNF286
Protein Families:	Transcription Factors



[View online »](#)

## Product images:



HEK293T cells were transfected with the pCMV6-ENTRY control (Left lane) or pCMV6-ENTRY ZNF286A ([RC216382], Right lane) cDNA for 48 hrs and lysed. Equivalent amounts of cell lysates (5 ug per lane) were separated by SDS-PAGE and immunoblotted with anti-ZNF286A. Positive lysates [LY412314] (100ug) and [LC412314] (20ug) can be purchased separately from OriGene.