

Product datasheet for **TA803368AM**

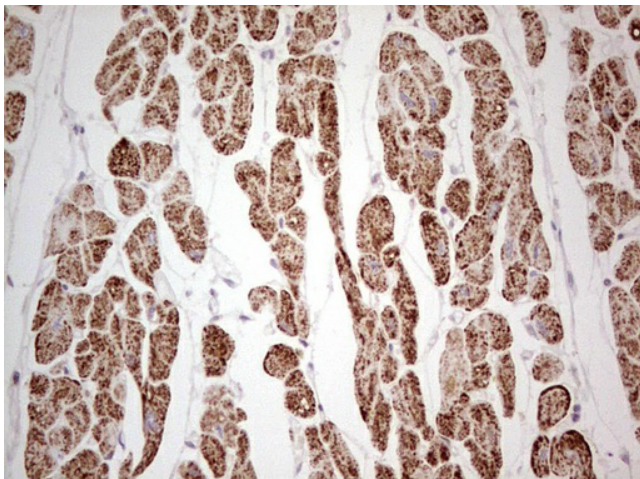
TMEM16A (ANO1) Mouse Monoclonal Antibody (Biotin conjugated) [Clone ID: OTI1H2]

Product data:

| | |
|-----------------------|--|
| Product Type: | Primary Antibodies |
| Clone Name: | OTI1H2 |
| Applications: | IHC |
| Recommended Dilution: | IHC 1:150 |
| Reactivity: | Human, Mouse, Rat |
| Host: | Mouse |
| Isotype: | IgG2a |
| Clonality: | Monoclonal |
| Immunogen: | Human recombinant protein fragment corresponding to amino acids 1-333 of human ANO1 (NP_060513) produced in E.coli. |
| Formulation: | PBS (pH 7.3) containing 1% BSA, 50% glycerol and 0.02% sodium azide. |
| Concentration: | 0.5 mg/ml |
| Purification: | Purified from mouse ascites fluids or tissue culture supernatant by affinity chromatography (protein A/G) |
| Conjugation: | Biotin |
| Storage: | Store at -20°C as received. |
| Stability: | Stable for 12 months from date of receipt. |
| Gene Name: | anoctamin 1 |
| Database Link: | NP_060513 Entrez Gene 101772 Mouse Entrez Gene 309135 Rat Entrez Gene 55107 Human Q5XXA6 |
| Synonyms: | DOG1; ORAOV2; TAOS2; TMEM16A |
| Protein Families: | Transmembrane |



[View online »](#)

Product images:

Immunohistochemical staining of paraffin-embedded Human adult heart tissue using anti-ANO1 mouse monoclonal antibody. (Heat-induced epitope retrieval by 1mM EDTA in 10mM Tris, pH8.5, 120°C for 3min, [TA803368])