

Product datasheet for **TA803361BM**

GBA Mouse Monoclonal Antibody (HRP conjugated) [Clone ID: OTI1D12]

Product data:

Product Type:	Primary Antibodies
Clone Name:	OTI1D12
Applications:	IHC, WB
Recommended Dilution:	WB 1:2000, IHC 1:150
Reactivity:	Human, Mouse, Rat
Host:	Mouse
Isotype:	IgG1
Clonality:	Monoclonal
Immunogen:	Human recombinant protein fragment corresponding to amino acids 40-315 of human GBA (NP_000148) produced in E.coli.
Formulation:	PBS (pH 7.3) containing 1% BSA, 50% glycerol.
Concentration:	0.5 mg/ml
Purification:	Purified from mouse ascites fluids or tissue culture supernatant by affinity chromatography (protein A/G)
Conjugation:	HRP
Storage:	Store at -20°C as received.
Stability:	Stable for 12 months from date of receipt.
Predicted Protein Size:	55.5 kDa
Gene Name:	glucosylceramidase beta
Database Link:	NP_000148 Entrez Gene 14466 Mouse Entrez Gene 2629 Human P04062
Background:	This gene encodes a lysosomal membrane protein that cleaves the beta-glucosidic linkage of glycosylceramide, an intermediate in glycolipid metabolism. Mutations in this gene cause Gaucher disease, a lysosomal storage disease characterized by an accumulation of glucocerebrosides. A related pseudogene is approximately 12 kb downstream of this gene on chromosome 1. Alternative splicing results in multiple transcript variants. [provided by RefSeq, Jan 2010]



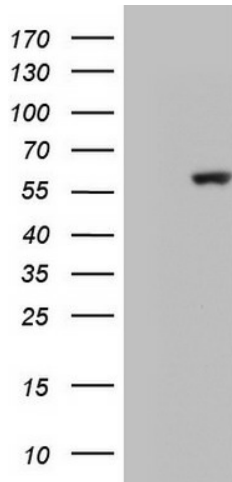
[View online »](#)

Synonyms: GBA1; GCB; GLUC

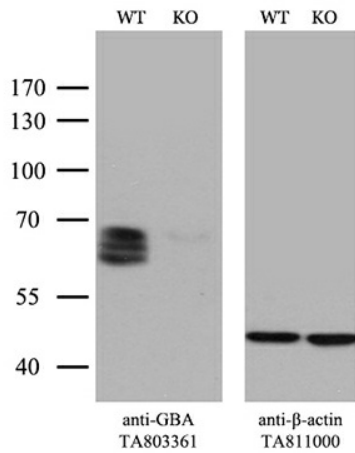
Protein Families: Druggable Genome

Protein Pathways: Lysosome, Metabolic pathways, Other glycan degradation, Sphingolipid metabolism

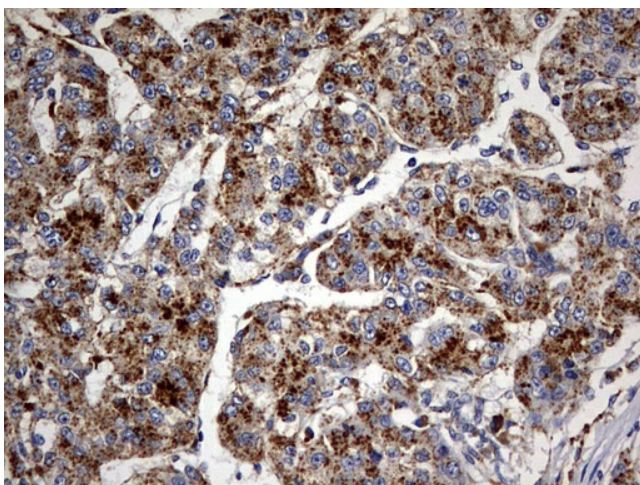
Product images:



HEK293T cells were transfected with the pCMV6-ENTRY control (Left lane) or pCMV6-ENTRY GBA ([RC216061], Right lane) cDNA for 48 hrs and lysed. Equivalent amounts of cell lysates (5 ug per lane) were separated by SDS-PAGE and immunoblotted with anti-GBA ([TA803361]). Positive lysates [LY400055] (100ug) and [LC400055] (20ug) can be purchased separately from OriGene.



Equivalent amounts of cell lysates (10 ug per lane) of wild-type HeLa cells (WT, Cat# LC810HELA) and GBA-Knockout HeLa cells (KO, Cat# [LC810416]) were separated by SDS-PAGE and immunoblotted with anti-GBA monoclonal antibody [TA803361]. Then the blotted membrane was stripped and reprobed with anti- β -actin antibody ([TA811000]) as a loading control (1:500).



Immunohistochemical staining of paraffin-embedded Carcinoma of Human liver tissue using anti-GBA mouse monoclonal antibody. (Heat-induced epitope retrieval by 10mM citric buffer, pH6.0, 120°C for 3min, [TA803361])