

Product datasheet for **TA803359BM**

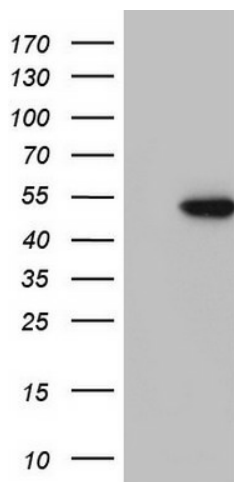
NR2C1 Mouse Monoclonal Antibody (HRP conjugated) [Clone ID: OTI3C6]

Product data:

Product Type:	Primary Antibodies
Clone Name:	OTI3C6
Applications:	WB
Recommended Dilution:	WB 1:2000
Reactivity:	Human, Mouse, Rat
Host:	Mouse
Isotype:	IgG1
Clonality:	Monoclonal
Immunogen:	Human recombinant protein fragment corresponding to amino acids 1-237 of human NR2C1 (NP_001027458) produced in E.coli.
Formulation:	PBS (pH 7.3) containing 1% BSA, 50% glycerol.
Concentration:	0.5 mg/ml
Purification:	Purified from mouse ascites fluids or tissue culture supernatant by affinity chromatography (protein A/G)
Conjugation:	HRP
Storage:	Store at -20°C as received.
Stability:	Stable for 12 months from date of receipt.
Predicted Protein Size:	51 kDa
Gene Name:	nuclear receptor subfamily 2 group C member 1
Database Link:	NP_001027458 Entrez Gene 22025 Mouse Entrez Gene 252924 Rat Entrez Gene 7181 Human P13056
Synonyms:	TR2
Protein Families:	Druggable Genome, Nuclear Hormone Receptor, Transcription Factors



[View online »](#)

Product images:

HEK293T cells were transfected with the pCMV6-ENTRY control (Left lane) or pCMV6-ENTRY NR2C1 ([RC208060], Right lane) cDNA for 48 hrs and lysed. Equivalent amounts of cell lysates (5 ug per lane) were separated by SDS-PAGE and immunoblotted with anti-NR2C1. Positive lysates [LY422297] (100ug) and [LC422297] (20ug) can be purchased separately from OriGene.