

## Product datasheet for **TA803355M**

### NR2C1 Mouse Monoclonal Antibody [Clone ID: OTI2E2]

#### Product data:

Product Type:	Primary Antibodies
Clone Name:	OTI2E2
Applications:	WB
Recommended Dilution:	WB 1:2000
Reactivity:	Human, Mouse, Rat
Host:	Mouse
Isotype:	IgG1
Clonality:	Monoclonal
Immunogen:	Human recombinant protein fragment corresponding to amino acids 1-237 of human NR2C1 (NP_001027458) produced in E.coli.
Formulation:	PBS (pH 7.3) containing 1% BSA, 50% glycerol and 0.02% sodium azide.
Concentration:	1 mg/ml
Purification:	Purified from mouse ascites fluids or tissue culture supernatant by affinity chromatography (protein A/G)
Conjugation:	Unconjugated
Storage:	Store at -20°C as received.
Stability:	Stable for 12 months from date of receipt.
Predicted Protein Size:	51 kDa
Gene Name:	nuclear receptor subfamily 2 group C member 1
Database Link:	<a href="#">NP_001027458</a> <a href="#">Entrez Gene 22025 Mouse</a> <a href="#">Entrez Gene 252924 Rat</a> <a href="#">Entrez Gene 7181 Human</a> <a href="#">P13056</a>


[View online »](#)

**Background:**

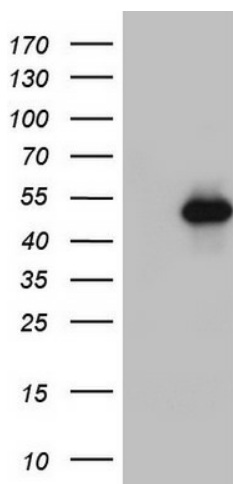
This gene encodes a nuclear hormone receptor characterized by a highly conserved DNA binding domain (DBD), a variable hinge region, and a carboxy-terminal ligand binding domain (LBD) that is typical for all members of the steroid/thyroid hormone receptor superfamily. This protein also belongs to a large family of ligand-inducible transcription factors that regulate gene expression by binding to specific DNA sequences within promoters of target genes. Multiple alternatively spliced transcript variants have been described, but the full-length nature of some of these variants has not been determined. [provided by RefSeq, Jul 2008]

**Synonyms:**

TR2

**Protein Families:**

Druggable Genome, Nuclear Hormone Receptor, Transcription Factors

**Product images:**


HEK293T cells were transfected with the pCMV6-ENTRY control (Left lane) or pCMV6-ENTRY NR2C1 ([RC208060], Right lane) cDNA for 48 hrs and lysed. Equivalent amounts of cell lysates (5 ug per lane) were separated by SDS-PAGE and immunoblotted with anti-NR2C1. Positive lysates [LY422297] (100ug) and [LC422297] (20ug) can be purchased separately from OriGene.