

Product datasheet for **TA803353**

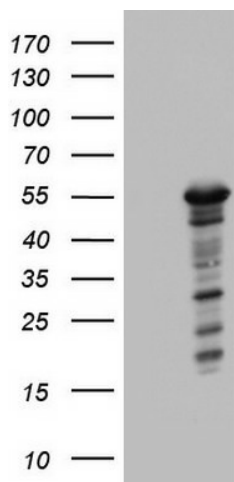
ZNF500 Mouse Monoclonal Antibody [Clone ID: OTI2C1]

Product data:

Product Type:	Primary Antibodies
Clone Name:	OTI2C1
Applications:	WB
Recommended Dilution:	WB 1:2000
Reactivity:	Human
Host:	Mouse
Isotype:	IgG1
Clonality:	Monoclonal
Immunogen:	Human recombinant protein fragment corresponding to amino acids 102-325 of human ZNF500 (NP_067678) produced in E.coli.
Formulation:	PBS (pH 7.3) containing 1% BSA, 50% glycerol and 0.02% sodium azide.
Concentration:	1 mg/ml
Purification:	Purified from mouse ascites fluids or tissue culture supernatant by affinity chromatography (protein A/G)
Conjugation:	Unconjugated
Storage:	Store at -20°C as received.
Stability:	Stable for 12 months from date of receipt.
Predicted Protein Size:	53.5 kDa
Gene Name:	zinc finger protein 500
Database Link:	NP_067678 Entrez Gene 26048 Human O60304
Synonyms:	ZKSCAN18; ZSCAN50



[View online »](#)

Product images:

HEK293T cells were transfected with the pCMV6-ENTRY control (Left lane) or pCMV6-ENTRY ZNF500 ([RC223457], Right lane) cDNA for 48 hrs and lysed. Equivalent amounts of cell lysates (5 ug per lane) were separated by SDS-PAGE and immunoblotted with anti-ZNF500. Positive lysates [LY411935] (100ug) and [LC411935] (20ug) can be purchased separately from OriGene.