

## Product datasheet for **TA803324M**

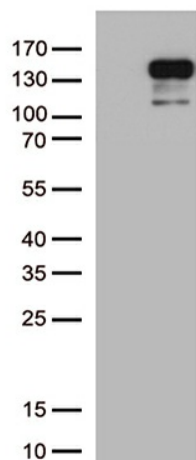
### N Cadherin (CDH2) Mouse Monoclonal Antibody [Clone ID: OTI5F8]

#### Product data:

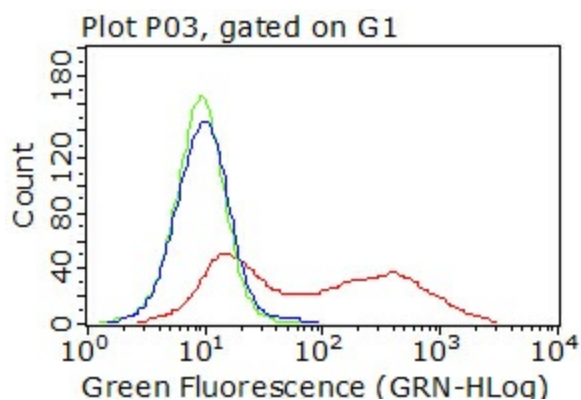
Product Type:	Primary Antibodies
Clone Name:	OTI5F8
Applications:	FC, WB
Recommended Dilution:	WB 1:2000
Reactivity:	Human, Mouse, Rat
Host:	Mouse
Isotype:	IgG2b
Clonality:	Monoclonal
Immunogen:	The extracellular domain of human CDH2 (NP_001783) produced in human cells.
Formulation:	PBS (pH 7.3) containing 1% BSA, 50% glycerol and 0.02% sodium azide.
Concentration:	1 mg/ml
Purification:	Purified from mouse ascites fluids or tissue culture supernatant by affinity chromatography (protein A/G)
Conjugation:	Unconjugated
Storage:	Store at -20°C as received.
Stability:	Stable for 12 months from date of receipt.
Predicted Protein Size:	97.2 kDa
Gene Name:	cadherin 2
Database Link:	<a href="#">NP_001783</a> <a href="#">Entrez Gene 12558 Mouse</a> <a href="#">Entrez Gene 83501 Rat</a> <a href="#">Entrez Gene 1000 Human</a> <a href="#">P19022</a>
Synonyms:	CD325; CDHN; CDw325; NCAD
Protein Families:	Druggable Genome, ES Cell Differentiation/IPS, Transmembrane
Protein Pathways:	Arrhythmogenic right ventricular cardiomyopathy (ARVC), Cell adhesion molecules (CAMs)


[View online »](#)

## Product images:



HEK293T cells were transfected with the pCMV6-ENTRY control (Left lane) or pCMV6-ENTRY CDH2 ([RC207170], Right lane) cDNA for 48 hrs and lysed. Equivalent amounts of cell lysates (5 ug per lane) were separated by SDS-PAGE and immunoblotted with anti-CDH2. Positive lysates [LY419743] (100ug) and [LC419743] (20ug) can be purchased separately from OriGene.



Living HEK293T cells transfected with either [RC207170] plasmid (red) or empty vector (blue) were immunostained by anti-CDH2 antibody ([TA803324]) or isotype control antibody (green), and then analyzed by flow cytometry (1:50).