

Product datasheet for TA803323

N Cadherin (CDH2) Mouse Monoclonal Antibody [Clone ID: OTI4G1]

Product data:

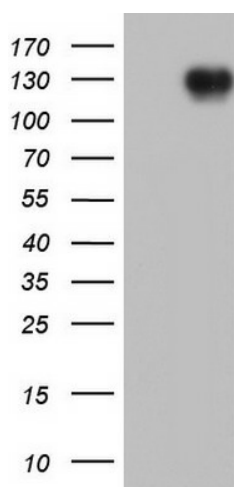
Product Type:	Primary Antibodies
Clone Name:	OTI4G1
Applications:	FC, WB
Recommended Dilution:	WB 1:2000
Reactivity:	Human, Mouse, Rat
Host:	Mouse
Isotype:	IgG1
Clonality:	Monoclonal
Immunogen:	The extracellular domain of human CDH2 (NP_001783) produced in human cells.
Formulation:	PBS (pH 7.3) containing 1% BSA, 50% glycerol and 0.02% sodium azide.
Concentration:	1 mg/ml
Purification:	Purified from mouse ascites fluids or tissue culture supernatant by affinity chromatography (protein A/G)
Conjugation:	Unconjugated
Storage:	Store at -20°C as received.
Stability:	Stable for 12 months from date of receipt.
Gene Name:	cadherin 2
Database Link:	NP_001783 Entrez Gene 12558 Mouse Entrez Gene 83501 Rat Entrez Gene 1000 Human P19022
Background:	This gene is a classical cadherin from the cadherin superfamily. The encoded protein is a calcium dependent cell-cell adhesion glycoprotein comprised of five extracellular cadherin repeats, a transmembrane region and a highly conserved cytoplasmic tail. The protein functions during gastrulation and is required for establishment of left-right asymmetry. At certain central nervous system synapses, presynaptic to postsynaptic adhesion is mediated at least in part by this gene product. [provided by RefSeq, Jul
Synonyms:	CD325; CDHN; CDw325; NCAD


[View online »](#)

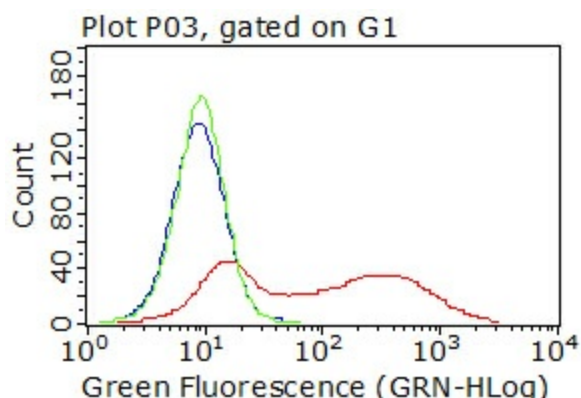
Protein Families: Druggable Genome, ES Cell Differentiation/IPS, Transmembrane

Protein Pathways: Arrhythmogenic right ventricular cardiomyopathy (ARVC), Cell adhesion molecules (CAMs)

Product images:



HEK293T cells were transfected with the pCMV6-ENTRY control (Left lane) or pCMV6-ENTRY CDH2 ([RC207170], Right lane) cDNA for 48 hrs and lysed. Equivalent amounts of cell lysates (5 ug per lane) were separated by SDS-PAGE and immunoblotted with anti-CDH2. Positive lysates [LY419743] (100ug) and [LC419743] (20ug) can be purchased separately from OriGene.



Living HEK293T cells transfected with either [RC207170] plasmid (red) or empty vector (blue) were immunostained by anti-CDH2 antibody (TA803323) or isotype control antibody (green), and then analyzed by flow cytometry (1:50).