

## Product datasheet for **TA803319BM**

### **TTF1 (NKX2-1) Mouse Monoclonal Antibody (HRP conjugated) [Clone ID: OTI15A10]**

#### **Product data:**

Product Type:	Primary Antibodies
Clone Name:	OTI15A10
Applications:	IF, WB
Recommended Dilution:	WB 1:2000
Reactivity:	Human, Mouse, Rat
Host:	Mouse
Isotype:	IgG1
Clonality:	Monoclonal
Immunogen:	Full length human recombinant protein of human NKX2-1 ( NP_003308) produced in E.coli.
Formulation:	PBS (pH 7.3) containing 1% BSA, 50% glycerol.
Concentration:	0.5 mg/ml
Purification:	Purified from mouse ascites fluids or tissue culture supernatant by affinity chromatography (protein A/G)
Conjugation:	HRP
Storage:	Store at -20°C as received.
Stability:	Stable for 12 months from date of receipt.
Gene Name:	NK2 homeobox 1
Database Link:	<a href="#">NP_003308</a> <a href="#">Entrez Gene 21869 Mouse</a> <a href="#">Entrez Gene 25628 Rat</a> <a href="#">Entrez Gene 7080 Human</a> <a href="#">P43699</a>



[View online »](#)

**Background:**

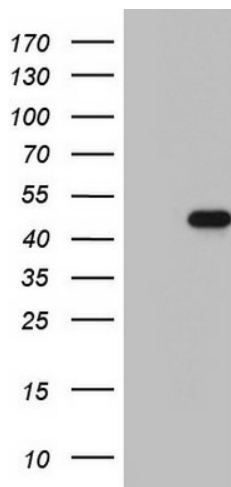
This gene encodes a protein initially identified as a thyroid-specific transcription factor. The encoded protein binds to the thyroglobulin promoter and regulates the expression of thyroid-specific genes but has also been shown to regulate the expression of genes involved in morphogenesis. Mutations and deletions in this gene are associated with benign hereditary chorea, choreoathetosis, congenital hypothyroidism, and neonatal respiratory distress, and may be associated with thyroid cancer. Multiple transcript variants encoding different isoforms have been found for this gene. This gene shares the symbol/alias 'TFF1' with another gene, transcription termination factor 1, which plays a role in ribosomal gene transcription. [provided by RefSeq, Apr

**Synonyms:**

BCH; BHC; NK-2; NKX2.1; NKX2A; NMTC1; T/EBP; TEBP; TITF1; TTF-1; TTF1

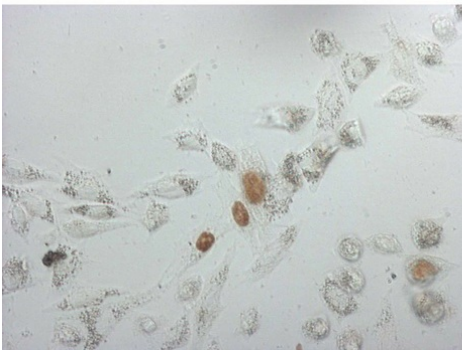
**Protein Families:**

Druggable Genome, ES Cell Differentiation/IPS, Transcription Factors

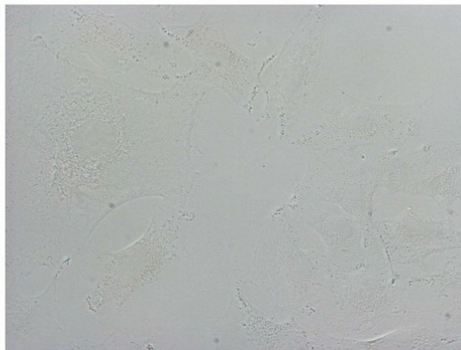
**Product images:**


HEK293T cells were transfected with the pCMV6-ENTRY control (Left lane) or pCMV6-ENTRY NKX2-1 ([RC217520], Right lane) cDNA for 48 hrs and lysed. Equivalent amounts of cell lysates (5 ug per lane) were separated by SDS-PAGE and immunoblotted with anti-NKX2-1. Positive lysates [LY401141] (100ug) and [LC401141] (20ug) can be purchased separately from OriGene.

NCI-H1975

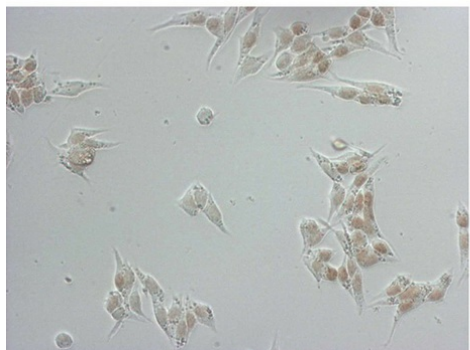


A549

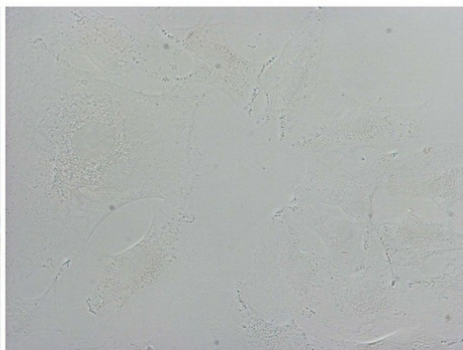


Immunocytochemistry staining of NCI-H1975 cells using anti-NKX2-1 mouse monoclonal antibody ([TA803319]). The right is A549 cells as negative control.

TT



A549



Immunocytochemistry staining of TT cells using anti-NKX2-1 mouse monoclonal antibody ([TA803319]). The right is A549 cells as negative control.