

## Product datasheet for **TA803310AM**

### Von Willebrand Factor (VWF) Mouse Monoclonal Antibody (Biotin conjugated) [Clone ID: OTI1D4]

#### Product data:

Product Type:	Primary Antibodies
Clone Name:	OTI1D4
Applications:	WB
Recommended Dilution:	WB 1:2000
Reactivity:	Human
Host:	Mouse
Isotype:	IgG2b
Clonality:	Monoclonal
Immunogen:	Human recombinant protein fragment corresponding to amino acids 764-1263 of human VWF (NP_000543) produced in SF9 cell.
Formulation:	PBS (pH 7.3) containing 1% BSA, 50% glycerol and 0.02% sodium azide.
Concentration:	0.5 mg/ml
Purification:	Purified from mouse ascites fluids or tissue culture supernatant by affinity chromatography (protein A/G)
Conjugation:	Biotin
Storage:	Store at -20°C as received.
Stability:	Stable for 12 months from date of receipt.
Predicted Protein Size:	309.3 kDa
Gene Name:	von Willebrand factor
Database Link:	<a href="#">NP_000543</a> <a href="#">Entrez Gene 7450 Human P04275</a>
Background:	The glycoprotein encoded by this gene functions as both an antihemophilic factor carrier and a platelet-vessel wall mediator in the blood coagulation system. It is crucial to the hemostasis process. Mutations in this gene or deficiencies in this protein result in von Willebrand's disease. An unprocessed pseudogene has been found on chromosome 22. [provided by RefSeq, Jul 2008]

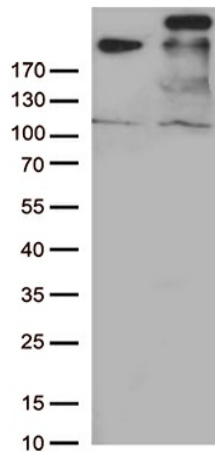


[View online »](#)

**Synonyms:** F8VWF; VWD

**Protein Families:** Druggable Genome, Secreted Protein

**Protein Pathways:** Complement and coagulation cascades, ECM-receptor interaction, Focal adhesion

**Product images:**

HEK293T cells were transfected with the pCMV6-ENTRY control (Left lane) or pCMV6-ENTRY VWF ([RC218497], Right lane) cDNA for 48 hrs and lysed. Equivalent amounts of cell lysates (5 ug per lane) were separated by SDS-PAGE and immunoblotted with anti-VWF (1:500).