

## Product datasheet for **TA803298**

### IL20 Mouse Monoclonal Antibody [Clone ID: OTI4C2]

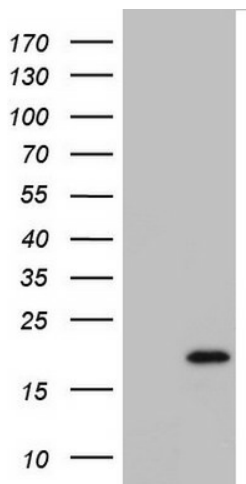
#### Product data:

Product Type:	Primary Antibodies
Clone Name:	OTI4C2
Applications:	WB
Recommended Dilution:	WB 1:2000
Reactivity:	Human
Host:	Mouse
Isotype:	IgG1
Clonality:	Monoclonal
Immunogen:	Human recombinant protein fragment corresponding to amino acids 25-176 of human IL20 (NP_061194) produced in E.coli.
Formulation:	PBS (pH 7.3) containing 1% BSA, 50% glycerol and 0.02% sodium azide.
Concentration:	1 mg/ml
Purification:	Purified from mouse ascites fluids or tissue culture supernatant by affinity chromatography (protein A/G)
Conjugation:	Unconjugated
Storage:	Store at -20°C as received.
Stability:	Stable for 12 months from date of receipt.
Predicted Protein Size:	19.9 kDa
Gene Name:	interleukin 20
Database Link:	<a href="#">NP_061194</a> <a href="#">Entrez Gene 50604 Human</a> <a href="#">Q9NYY1</a>
Background:	The protein encoded by this gene is a cytokine structurally related to interleukin 10 (IL10). This cytokine has been shown to transduce its signal through signal transducer and activator of transcription 3 (STAT3) in keratinocytes. A specific receptor for this cytokine is found to be expressed in skin and upregulated dramatically in psoriatic skin, suggesting a role for this protein in epidermal function and psoriasis. [provided by RefSeq, Jul 2008]



[View online »](#)

**Synonyms:** IL-20; IL10D; ZCYTO10  
**Protein Families:** Druggable Genome, Secreted Protein  
**Protein Pathways:** Cytokine-cytokine receptor interaction, Jak-STAT signaling pathway

**Product images:**

HEK293T cells were transfected with the pCMV6-ENTRY control (Left lane) or pCMV6-ENTRY IL20 ([RC212397], Right lane) cDNA for 48 hrs and lysed. Equivalent amounts of cell lysates (5 ug per lane) were separated by SDS-PAGE and immunoblotted with anti-IL20. Positive lysates [LY412869] (100ug) and [LC412869] (20ug) can be purchased separately from OriGene.