

Product datasheet for **TA803297AM**

MRPS7 Mouse Monoclonal Antibody (Biotin conjugated) [Clone ID: OTI5E11]

Product data:

Product Type:	Primary Antibodies
Clone Name:	OTI5E11
Applications:	WB
Recommended Dilution:	WB 1:2000
Reactivity:	Human
Host:	Mouse
Isotype:	IgG1
Clonality:	Monoclonal
Immunogen:	Human recombinant protein fragment corresponding to amino acids 38-242 of human MRPS7 (NP_057055) produced in E.coli.
Formulation:	PBS (pH 7.3) containing 1% BSA, 50% glycerol and 0.02% sodium azide.
Concentration:	0.5 mg/ml
Purification:	Purified from mouse ascites fluids or tissue culture supernatant by affinity chromatography (protein A/G)
Conjugation:	Biotin
Storage:	Store at -20°C as received.
Stability:	Stable for 12 months from date of receipt.
Predicted Protein Size:	28 kDa
Gene Name:	mitochondrial ribosomal protein S7
Database Link:	NP_057055 Entrez Gene 51081 Human Q9Y2R9



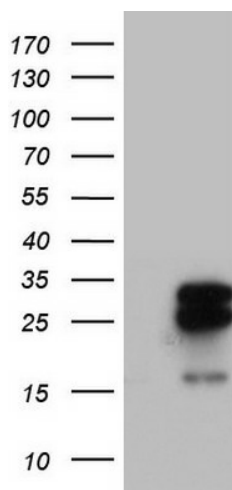
[View online »](#)

Background:

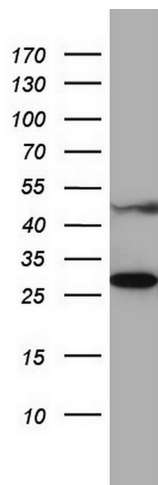
Mammalian mitochondrial ribosomal proteins are encoded by nuclear genes and help in protein synthesis within the mitochondrion. Mitochondrial ribosomes (mitoribosomes) consist of a small 28S subunit and a large 39S subunit. They have an estimated 75% protein to rRNA composition compared to prokaryotic ribosomes, where this ratio is reversed. Another difference between mammalian mitoribosomes and prokaryotic ribosomes is that the latter contain a 5S rRNA. Among different species, the proteins comprising the mitoribosome differ greatly in sequence, and sometimes in biochemical properties, which prevents easy recognition by sequence homology. This gene encodes a 28S subunit protein. In the prokaryotic ribosome, the comparable protein is thought to play an essential role in organizing the 3' domain of the 16 S rRNA in the vicinity of the P- and A-sites. Pseudogenes corresponding to this gene are found on chromosomes 8p and 12p. [provided by RefSeq, Jul

Synonyms:

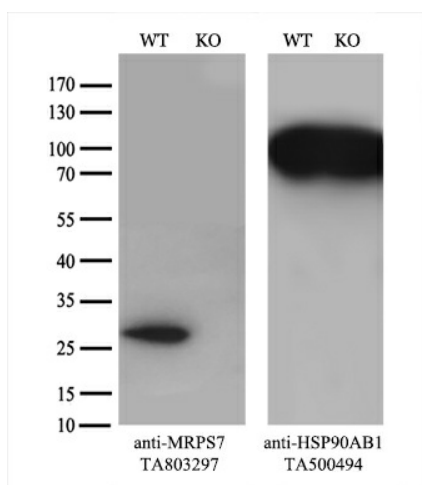
bMRP27a; MRP-S; MRP-S7; RP-S7; RPMS7; S7mt

Product images:


HEK293T cells were transfected with the pCMV6-ENTRY control (Cat# [PS100001], Left lane) or pCMV6-ENTRY MRPS7 (Cat# [RC200031], Right lane) cDNA for 48 hrs and lysed. Equivalent amounts of cell lysates (5 ug per lane) were separated by SDS-PAGE and immunoblotted with anti-MRPS7(Cat# [TA803297]). Positive lysates [LY414276] (100ug) and [LC414276] (20ug) can be purchased separately from OriGene.



Western blot analysis of A549 cell lysate (35ug) by using anti-MRPS7 monoclonal antibody. Dilution: 1:500



Equivalent amounts of cell lysates (10 ug per lane) of wild-type HeLa cells (WT, Cat# LC810HELA) and MRPS7-Knockout HeLa cells (KO, Cat# [LC831777]) were separated by SDS-PAGE and immunoblotted with anti-MRPS7 monoclonal antibody [TA803297] (1:500). Then the blotted membrane was stripped and reprobed with anti-HSP90 antibody as a loading control.