

## Product datasheet for **TA803253AM**

### **E Cadherin (CDH1) Mouse Monoclonal Antibody (Biotin conjugated) [Clone ID: OTI3C11]**

#### **Product data:**

Product Type:	Primary Antibodies
Clone Name:	OTI3C11
Applications:	IHC, WB
Recommended Dilution:	WB 1:2000
Reactivity:	Human
Host:	Mouse
Isotype:	IgG1
Clonality:	Monoclonal
Immunogen:	The extracellular domain of human CDH1 (NP_004351) produced in human cells.
Formulation:	PBS (pH 7.3) containing 1% BSA, 50% glycerol and 0.02% sodium azide.
Concentration:	0.5 mg/ml
Purification:	Purified from mouse ascites fluids or tissue culture supernatant by affinity chromatography (protein A/G)
Conjugation:	Biotin
Storage:	Store at -20°C as received.
Stability:	Stable for 12 months from date of receipt.
Predicted Protein Size:	94.8 kDa
Gene Name:	cadherin 1
Database Link:	<a href="#">NP_004351</a> <a href="#">Entrez Gene 999 Human P12830</a>



[View online »](#)

**Background:**

This gene is a classical cadherin from the cadherin superfamily. The encoded protein is a calcium dependent cell-cell adhesion glycoprotein comprised of five extracellular cadherin repeats, a transmembrane region and a highly conserved cytoplasmic tail. Mutations in this gene are correlated with gastric, breast, colorectal, thyroid and ovarian cancer. Loss of function is thought to contribute to progression in cancer by increasing proliferation, invasion, and/or metastasis. The ectodomain of this protein mediates bacterial adhesion to mammalian cells and the cytoplasmic domain is required for internalization. Identified transcript variants arise from mutation at consensus splice sites. [provided by RefSeq, Jul 2008]

**Synonyms:**

Arc-1; CD324; CDHE; ECAD; LCAM; UVO

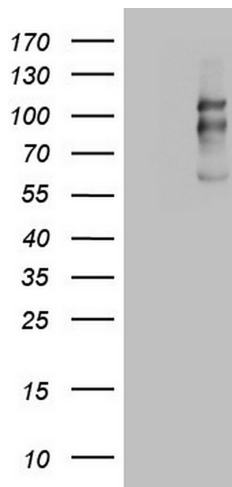
**Protein Families:**

Druggable Genome, ES Cell Differentiation/IPS, Transmembrane

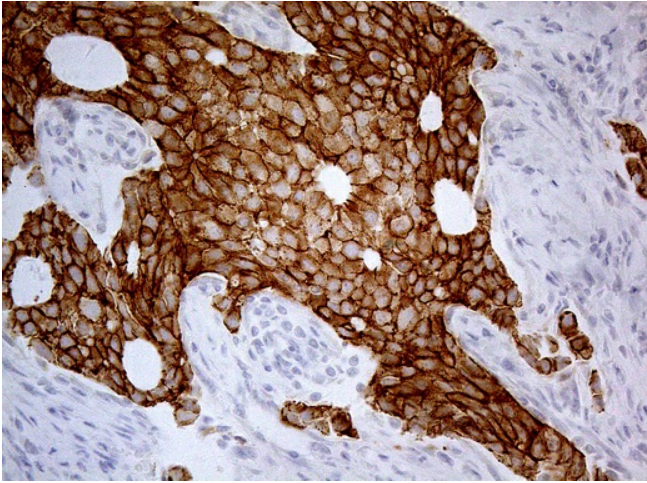
**Protein Pathways:**

Adherens junction, Bladder cancer, Cell adhesion molecules (CAMs), Endometrial cancer, Melanoma, Pathogenic Escherichia coli infection, Pathways in cancer, Thyroid cancer

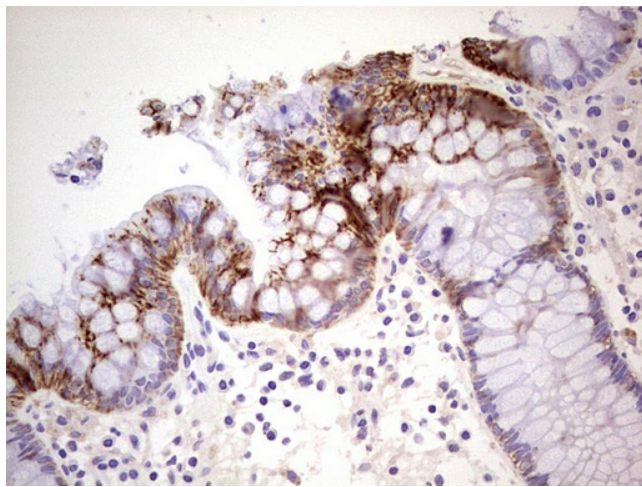
**Product images:**



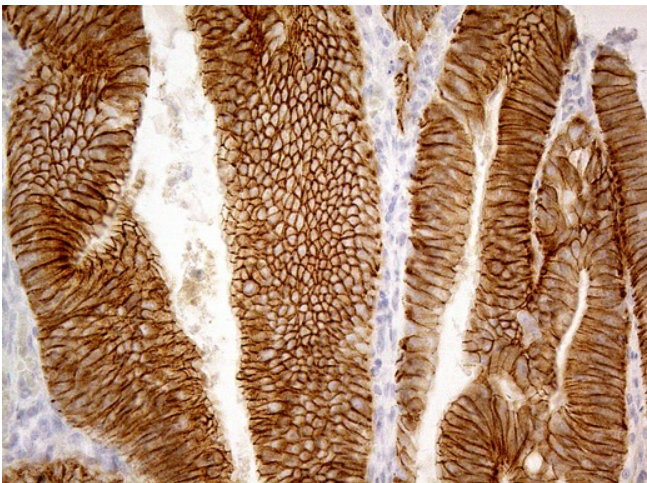
HEK293T cells were transfected with the pCMV6-ENTRY control (Left lane) or pCMV6-ENTRY CDH1 ([RC220731], Right lane) cDNA for 48 hrs and lysed. Equivalent amounts of cell lysates (5 ug per lane) were separated by SDS-PAGE and immunoblotted with anti-CDH1. Positive lysates [LY401389] (100ug) and [LC401389] (20ug) can be purchased separately from OriGene.



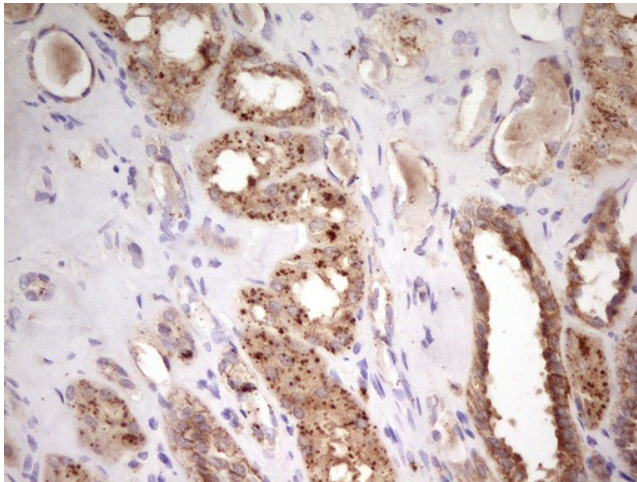
Immunohistochemical staining of paraffin-embedded Adenocarcinoma of Human breast tissue using anti-CDH1 mouse monoclonal antibody. (Heat-induced epitope retrieval by Tris-EDTA, pH9.0, [TA803253]) (1:100)



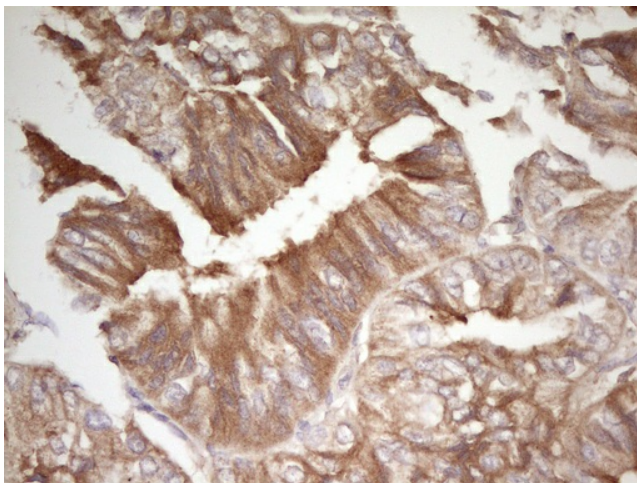
Immunohistochemical staining of paraffin-embedded Human colon tissue within the normal limits using anti-CDH1 mouse monoclonal antibody. ([TA803253]) Dilution: 1:150



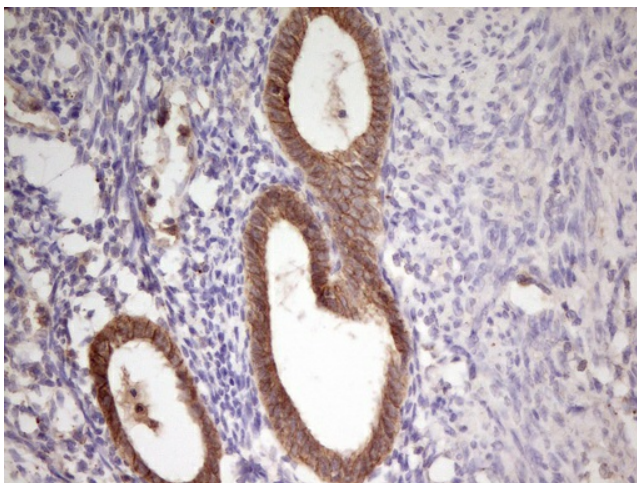
Immunohistochemical staining of paraffin-embedded Adenocarcinoma of Human colon tissue using anti-CDH1 mouse monoclonal antibody. (Heat-induced epitope retrieval by Tris-EDTA, pH9.0, [TA803253]) (1:100)



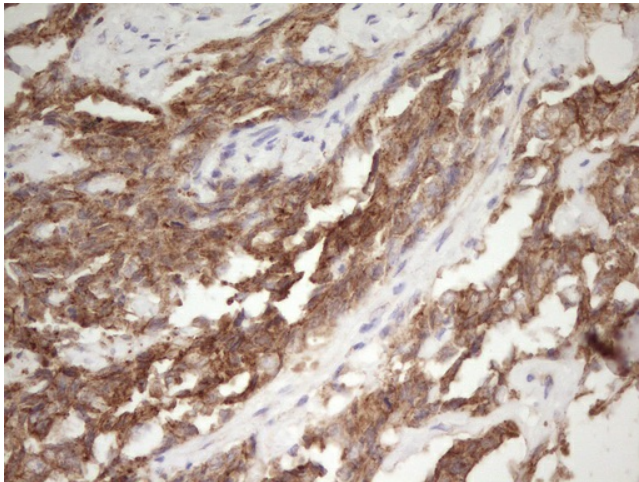
Immunohistochemical staining of paraffin-embedded Human Kidney tissue within the normal limits using anti-CDH1 mouse monoclonal antibody. (Heat-induced epitope retrieval by Tris-EDTA, pH8.0, [TA803253]) Dilution: 1:150



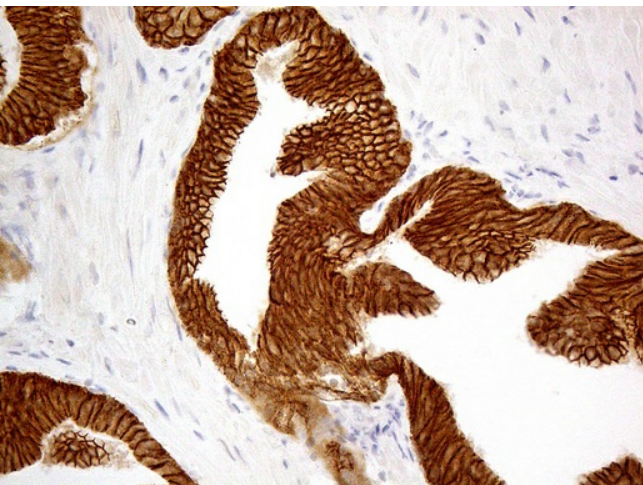
Immunohistochemical staining of paraffin-embedded Human pancreas tissue within the normal limits using anti-CDH1 mouse monoclonal antibody. (Heat-induced epitope retrieval by Tris-EDTA, pH8.0, [TA803253]) Dilution: 1:150



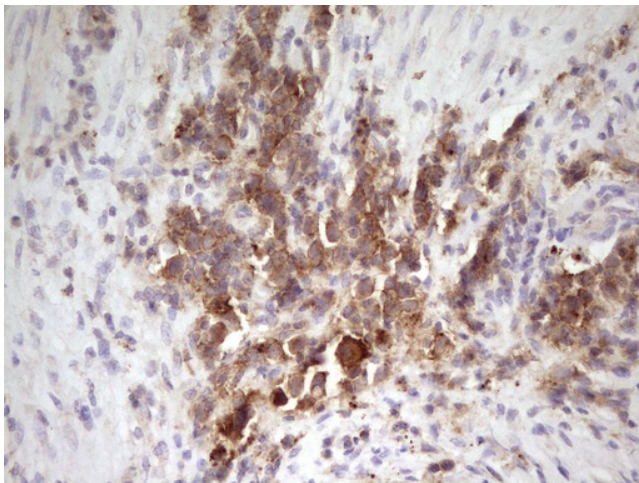
Immunohistochemical staining of paraffin-embedded Carcinoma of Human pancreas tissue using anti-CDH1 mouse monoclonal antibody. (Heat-induced epitope retrieval by Tris-EDTA, pH8.0, [TA803253]) Dilution: 1:150



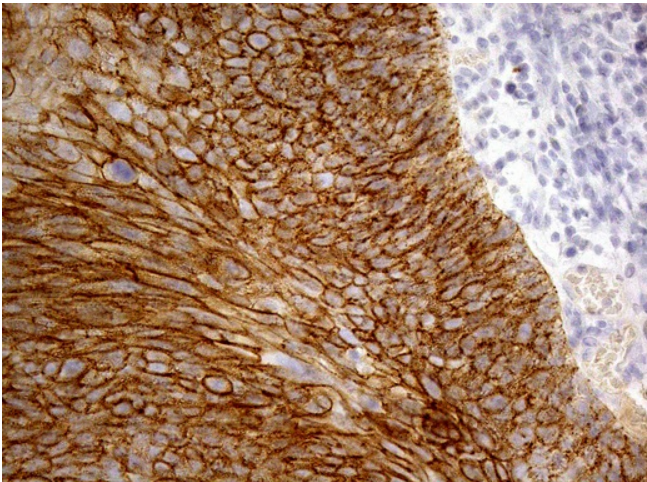
Immunohistochemical staining of paraffin-embedded Adenocarcinoma of Human endometrium tissue using anti-CDH1 mouse monoclonal antibody. (Heat-induced epitope retrieval by Tris-EDTA, pH8.0, [TA803253]) Dilution: 1:150



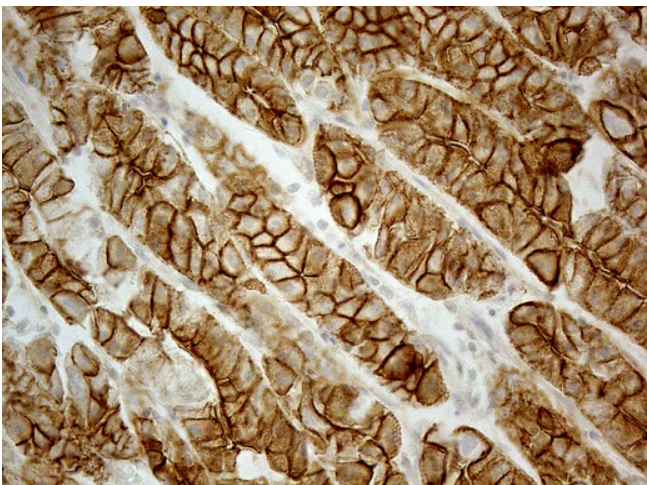
Immunohistochemical staining of paraffin-embedded Carcinoma of Human prostate tissue using anti-CDH1 mouse monoclonal antibody. (Heat-induced epitope retrieval by Tris-EDTA, pH9.0, [TA803253]) (1:100)



Immunohistochemical staining of paraffin-embedded Human bladder tissue within the normal limits using anti-CDH1 mouse monoclonal antibody. (Heat-induced epitope retrieval by Tris-EDTA, pH8.0, [TA803253]) Dilution: 1:150



Immunohistochemical staining of paraffin-embedded Carcinoma of Human Cervix Uterus using anti-CDH1 mouse monoclonal antibody. (Heat-induced epitope retrieval by Tris-EDTA, pH9.0, [TA803253]) (1:100)



Immunohistochemical staining of paraffin-embedded Human Gastric Carcinoma using anti-CDH1 mouse monoclonal antibody. (Heat-induced epitope retrieval by Tris-EDTA, pH9.0, [TA803253]) (1:100)