

Product datasheet for **TA803241S**

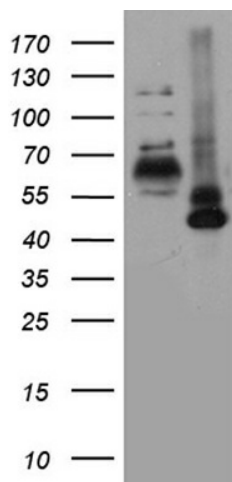
ROR alpha (RORA) Mouse Monoclonal Antibody [Clone ID: OTI5A6]

Product data:

Product Type:	Primary Antibodies
Clone Name:	OTI5A6
Applications:	WB
Recommended Dilution:	WB 1:2000
Reactivity:	Human, Mouse, Rat
Host:	Mouse
Isotype:	IgG2b
Clonality:	Monoclonal
Immunogen:	Human recombinant protein fragment corresponding to amino acids 98-345 of human RORA (NP_002934) produced in E.coli.
Formulation:	PBS (pH 7.3) containing 1% BSA, 50% glycerol and 0.02% sodium azide.
Concentration:	1 mg/ml
Purification:	Purified from mouse ascites fluids or tissue culture supernatant by affinity chromatography (protein A/G)
Conjugation:	Unconjugated
Storage:	Store at -20°C as received.
Stability:	Stable for 12 months from date of receipt.
Predicted Protein Size:	62.1 kDa
Gene Name:	RAR related orphan receptor A
Database Link:	NP_002934 Entrez Gene 19883 Mouse Entrez Gene 300807 Rat Entrez Gene 6095 Human P35398
Synonyms:	NR1F1; ROR1; ROR2; ROR3; RZR-ALPHA; RZRA
Protein Families:	Druggable Genome, Nuclear Hormone Receptor, Transcription Factors



[View online »](#)

Product images:

HEK293T cells were transfected with the pCMV6-ENTRY control (Left lane) or pCMV6-ENTRY RORA ([RC214618], Right lane) cDNA for 48 hrs and lysed. Equivalent amounts of cell lysates (5 ug per lane) were separated by SDS-PAGE and immunoblotted with anti-RORA (1:2000). Positive lysates [LY401041] (100ug) and [LC401041] (20ug) can be purchased separately from OriGene.