

## Product datasheet for **TA803225M**

### **PLOD2 Mouse Monoclonal Antibody [Clone ID: OTI7G5]**

#### **Product data:**

Product Type:	Primary Antibodies
Clone Name:	OTI7G5
Applications:	IHC, WB
Recommended Dilution:	WB 1:2000, IHC 1:150
Reactivity:	Human, Mouse, Rat
Host:	Mouse
Isotype:	IgG2a
Clonality:	Monoclonal
Immunogen:	Human recombinant protein fragment corresponding to amino acids 359-640 of human PLOD2 (NP_891988) produced in E.coli.
Formulation:	PBS (pH 7.3) containing 1% BSA, 50% glycerol and 0.02% sodium azide.
Concentration:	1 mg/ml
Purification:	Purified from mouse ascites fluids or tissue culture supernatant by affinity chromatography (protein A/G)
Conjugation:	Unconjugated
Storage:	Store at -20°C as received.
Stability:	Stable for 12 months from date of receipt.
Gene Name:	procollagen-lysine,2-oxoglutarate 5-dioxygenase 2
Database Link:	<a href="#">NP_891988</a> <a href="#">Entrez Gene 5352 Human</a> <a href="#">O00469</a>



[View online »](#)

**Background:**

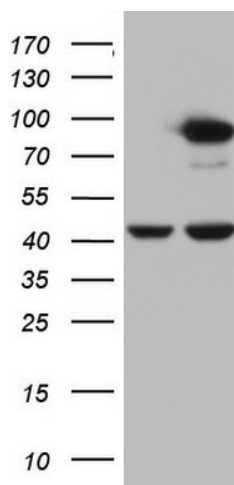
The protein encoded by this gene is a membrane-bound homodimeric enzyme that is localized to the cisternae of the rough endoplasmic reticulum. The enzyme (cofactors iron and ascorbate) catalyzes the hydroxylation of lysyl residues in collagen-like peptides. The resultant hydroxylysyl groups are attachment sites for carbohydrates in collagen and thus are critical for the stability of intermolecular crosslinks. Some patients with Ehlers-Danlos syndrome type VIB have deficiencies in lysyl hydroxylase activity. Mutations in the coding region of this gene are associated with Bruck syndrome. Alternative splicing results in multiple transcript variants encoding different isoforms. [provided by RefSeq, Jul 2008]

**Synonyms:**

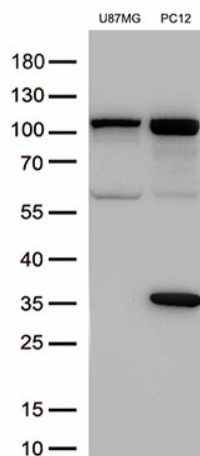
BRKS2; LH2; TLH

**Protein Pathways:**

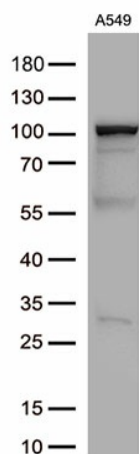
Lysine degradation

**Product images:**


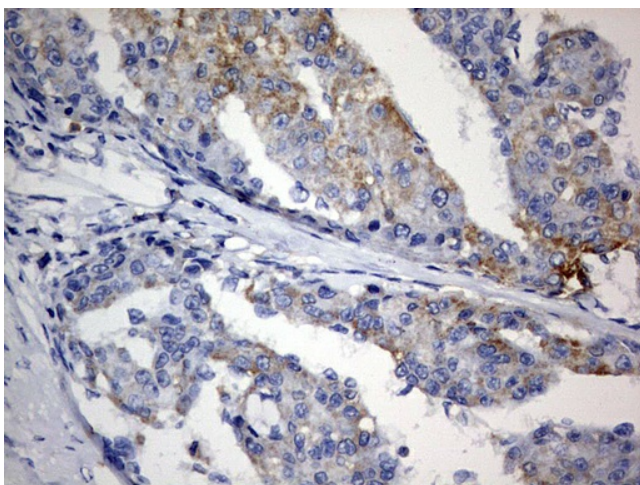
HEK293T cells were transfected with the pCMV6-ENTRY control (Left lane) or pCMV6-ENTRY PLOD2 ([RC207610], Right lane) cDNA for 48 hrs and lysed. Equivalent amounts of cell lysates (5 ug per lane) were separated by SDS-PAGE and immunoblotted with anti-PLOD2. Positive lysates [LY403652] (100ug) and [LC403652] (20ug) can be purchased separately from OriGene.



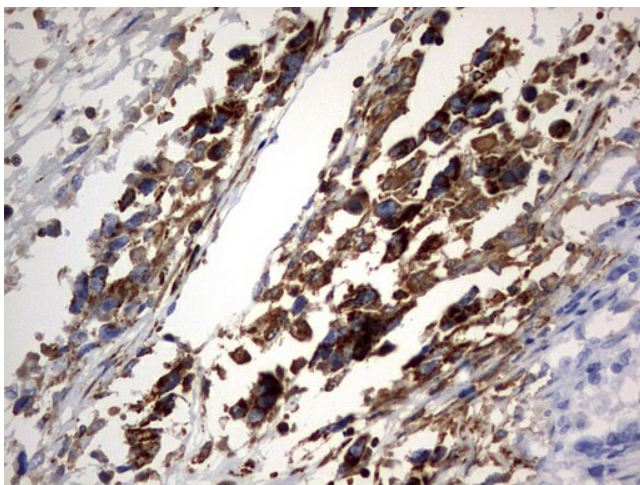
Western blot analysis of extracts (30ug) from 2 cell lines lysates by using anti-PLOD2 monoclonal antibody([TA803225], 1:500)



Western blot analysis of extracts (30ug) from A549 lysate by using anti-PLOD2 monoclonal antibody([TA803225], 1:500)



Immunohistochemical staining of paraffin-embedded Carcinoma of Human liver tissue using anti-PLOD2 mouse monoclonal antibody. Heat-induced epitope retrieval by EDTA solution buffer pH 8.0 at 120°C for 3 min.



Immunohistochemical staining of paraffin-embedded Adenocarcinoma of Human ovary tissue using anti-PLOD2 mouse monoclonal antibody. Heat-induced epitope retrieval by EDTA solution buffer pH 8.0 at 120°C for 3 min.