

Product datasheet for **TA803211**

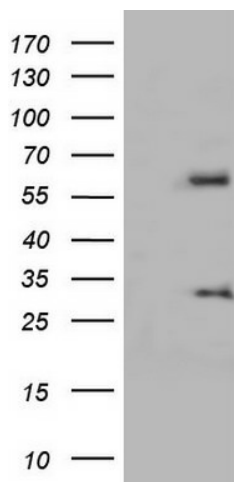
C3IP1 (KLHL12) Mouse Monoclonal Antibody [Clone ID: OTI4C10]

Product data:

Product Type:	Primary Antibodies
Clone Name:	OTI4C10
Applications:	WB
Recommended Dilution:	WB 1:500
Reactivity:	Human, Mouse, Rat
Host:	Mouse
Isotype:	IgG1
Clonality:	Monoclonal
Immunogen:	Human recombinant protein fragment corresponding to amino acids 177-405 of human KLHL12 (NP_067646) produced in E.coli.
Formulation:	PBS (pH 7.3) containing 1% BSA, 50% glycerol and 0.02% sodium azide.
Concentration:	1 mg/ml
Purification:	Purified from mouse ascites fluids or tissue culture supernatant by affinity chromatography (protein A/G)
Conjugation:	Unconjugated
Storage:	Store at -20°C as received.
Stability:	Stable for 12 months from date of receipt.
Gene Name:	kelch like family member 12
Database Link:	NP_067646 Entrez Gene 240756 Mouse Entrez Gene 266772 Rat Entrez Gene 59349 Human Q53G59
Synonyms:	C3IP1; DKIR



[View online »](#)

Product images:

HEK293T cells were transfected with the pCMV6-ENTRY control (Left lane) or pCMV6-ENTRY KLHL12 ([RC200894], Right lane) cDNA for 48 hrs and lysed. Equivalent amounts of cell lysates (5 ug per lane) were separated by SDS-PAGE and immunoblotted with anti-KLHL12. Positive lysates [LY402867] (100ug) and [LC402867] (20ug) can be purchased separately from OriGene.