

Product datasheet for **TA803201M**

ROR alpha (RORA) Mouse Monoclonal Antibody [Clone ID: OTI2C4]

Product data:

Product Type:	Primary Antibodies
Clone Name:	OTI2C4
Applications:	WB
Recommended Dilution:	WB 1:2000
Reactivity:	Human, Mouse, Rat
Host:	Mouse
Isotype:	IgG2b
Clonality:	Monoclonal
Immunogen:	Human recombinant protein fragment corresponding to amino acids 98-345 of human RORA (NP_002934) produced in E.coli.
Formulation:	PBS (pH 7.3) containing 1% BSA, 50% glycerol and 0.02% sodium azide.
Concentration:	1 mg/ml
Purification:	Purified from mouse ascites fluids or tissue culture supernatant by affinity chromatography (protein A/G)
Conjugation:	Unconjugated
Storage:	Store at -20°C as received.
Stability:	Stable for 12 months from date of receipt.
Predicted Protein Size:	62.1 kDa
Gene Name:	RAR related orphan receptor A
Database Link:	NP_002934 Entrez Gene 19883 Mouse Entrez Gene 300807 Rat Entrez Gene 6095 Human P35398

[View online »](#)

Background:

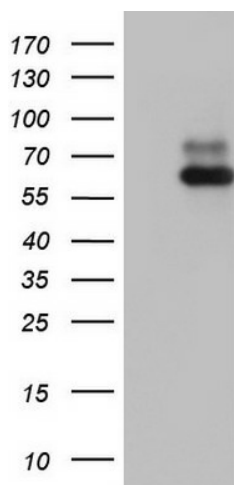
The protein encoded by this gene is a member of the NR1 subfamily of nuclear hormone receptors. It can bind as a monomer or as a homodimer to hormone response elements upstream of several genes to enhance the expression of those genes. The specific functions of this protein are not known, but it has been shown to interact with NM23-2, a nucleoside diphosphate kinase involved in organogenesis and differentiation, as well as with NM23-1, the product of a tumor metastasis suppressor candidate gene. Four transcript variants encoding different isoforms have been described for this gene. [provided by RefSeq, Jul 2008]

Synonyms:

NR1F1; ROR1; ROR2; ROR3; RZR-ALPHA; RZRA

Protein Families:

Druggable Genome, Nuclear Hormone Receptor, Transcription Factors

Product images:


HEK293T cells were transfected with the pCMV6-ENTRY control (Cat# [PS100001], Left lane) or pCMV6-ENTRY RORA (Cat# [RC214618], Right lane) cDNA for 48 hrs and lysed. Equivalent amounts of cell lysates (5 ug per lane) were separated by SDS-PAGE and immunoblotted with anti-RORA (Cat# [TA803201]). Positive lysates [LY401041] (100ug) and [LC401041] (20ug) can be purchased separately from OriGene.