

## Product datasheet for **TA803198AM**

### Calcium independent Phospholipase A2 (PLA2G6) Mouse Monoclonal Antibody (Biotin conjugated) [Clone ID: OTI10A2]

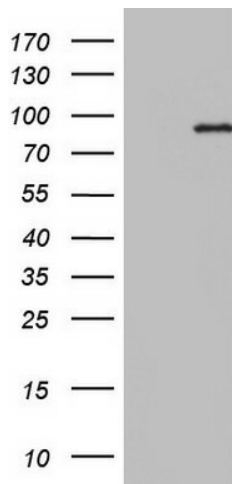
#### Product data:

|                         |   |
|-------------------------|---|
| Product Type:           | Primary Antibodies  |
| Clone Name:             | OTI10A2   |
| Applications:           | WB  |
| Recommended Dilution:   | WB 1:500  |
| Reactivity:             | Human, Mouse, Rat   |
| Host:                   | Mouse   |
| Isotype:                | IgG2a   |
| Clonality:              | Monoclonal  |
| Immunogen:              | Human recombinant protein fragment corresponding to amino acids 490-752 of human PLA2G6 (NP_001004426) produced in E.coli.  |
| Formulation:            | PBS (pH 7.3) containing 1% BSA, 50% glycerol and 0.02% sodium azide.  |
| Concentration:          | 0.5 mg/ml   |
| Purification:           | Purified from mouse ascites fluids or tissue culture supernatant by affinity chromatography (protein A/G)   |
| Conjugation:            | Biotin  |
| Storage:                | Store at -20°C as received.   |
| Stability:              | Stable for 12 months from date of receipt.  |
| Predicted Protein Size: | 83.9 kDa  |
| Gene Name:              | phospholipase A2 group VI   |
| Database Link:          | <a href="#">NP_001004426</a><br><a href="#">Entrez Gene 53357 Mouse</a> <a href="#">Entrez Gene 360426 Rat</a> <a href="#">Entrez Gene 8398 Human</a><br><a href="#">O60733</a> |



[View online »](#)

- Background:** The protein encoded by this gene is an A2 phospholipase, a class of enzyme that catalyzes the release of fatty acids from phospholipids. The encoded protein may play a role in phospholipid remodelling, arachidonic acid release, leukotriene and prostaglandin synthesis, fas-mediated apoptosis, and transmembrane ion flux in glucose-stimulated B-cells. Several transcript variants encoding multiple isoforms have been described, but the full-length nature of only three of them have been determined to date. [provided by RefSeq, Dec 2010]
- Synonyms:** Cal-PLA2; GVI; INAD1; iPLA2; IPLA2-VIA; iPLA2beta; NBIA2; NBIA2A; NBIA2B; PARK14; PLA2; PNPLA9
- Protein Pathways:** alpha-Linolenic acid metabolism, Arachidonic acid metabolism, Ether lipid metabolism, Fc epsilon RI signaling pathway, Fc gamma R-mediated phagocytosis, Glycerophospholipid metabolism, GnRH signaling pathway, Linoleic acid metabolism, Long-term depression, MAPK signaling pathway, Metabolic pathways, Vascular smooth muscle contraction, VEGF signaling pathway

**Product images:**

HEK293T cells were transfected with the pCMV6-ENTRY control (Left lane) or pCMV6-ENTRY PLA2G6 ([RC208735], Right lane) cDNA for 48 hrs and lysed. Equivalent amounts of cell lysates (5 ug per lane) were separated by SDS-PAGE and immunoblotted with anti-PLA2G6. Positive lysates [LY400377] (100ug) and [LC400377] (20ug) can be purchased separately from OriGene.