

Product datasheet for **TA803196AM**

PRRX1 Mouse Monoclonal Antibody (Biotin conjugated) [Clone ID: OTI1E6]

Product data:

Product Type:	Primary Antibodies
Clone Name:	OTI1E6
Applications:	WB
Recommended Dilution:	WB 1:2000
Reactivity:	Human, Mouse, Rat
Host:	Mouse
Isotype:	IgG1
Clonality:	Monoclonal
Immunogen:	Full length human recombinant protein of human PRRX1 (NP_073207) produced in E.coli.
Formulation:	PBS (pH 7.3) containing 1% BSA, 50% glycerol and 0.02% sodium azide.
Concentration:	0.5 mg/ml
Purification:	Purified from mouse ascites fluids or tissue culture supernatant by affinity chromatography (protein A/G)
Conjugation:	Biotin
Storage:	Store at -20°C as received.
Stability:	Stable for 12 months from date of receipt.
Predicted Protein Size:	27.1 kDa
Gene Name:	paired related homeobox 1
Database Link:	NP_073207 Entrez Gene 18933 Mouse Entrez Gene 266813 Rat Entrez Gene 5396 Human P54821
Background:	The DNA-associated protein encoded by this gene is a member of the paired family of homeobox proteins localized to the nucleus. The protein functions as a transcription co-activator, enhancing the DNA-binding activity of serum response factor, a protein required for the induction of genes by growth and differentiation factors. The protein regulates muscle creatine kinase, indicating a role in the establishment of diverse mesodermal muscle types. Alternative splicing yields two isoforms that differ in abundance and expression patterns. [provided by RefSeq, Jul 2008]

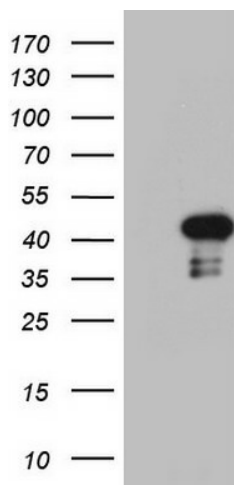


[View online »](#)

Synonyms: AGOTC; PHOX1; PMX1; PRX-1; PRX1

Protein Families: Transcription Factors

Product images:



HEK293T cells were transfected with the pCMV6-ENTRY control (Left lane) or pCMV6-ENTRY PRRX1 ([RC210393], Right lane) cDNA for 48 hrs and lysed. Equivalent amounts of cell lysates (5 ug per lane) were separated by SDS-PAGE and immunoblotted with anti-PRRX1. Positive lysates [LY411607] (100ug) and [LC411607] (20ug) can be purchased separately from OriGene.