

## Product datasheet for **TA803190M**

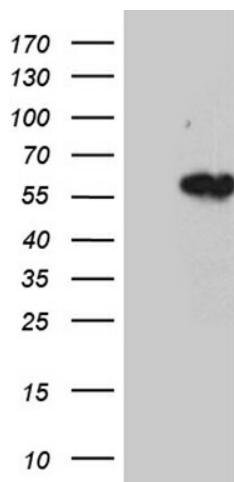
### Cytokeratin 14 (KRT14) Mouse Monoclonal Antibody [Clone ID: OTI5F2]

#### Product data:

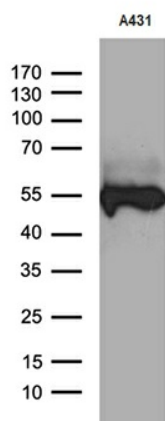
Product Type:	Primary Antibodies
Clone Name:	OTI5F2
Applications:	IHC, WB
Recommended Dilution:	WB 1:500, IHC 1:2000
Reactivity:	Human, Mouse, Rat
Host:	Mouse
Isotype:	IgG1
Clonality:	Monoclonal
Immunogen:	Human recombinant protein fragment corresponding to amino acids 261-472 of human KRT14 (NP_000517) produced in E.coli.
Formulation:	PBS (pH 7.3) containing 1% BSA, 50% glycerol and 0.02% sodium azide.
Concentration:	1 mg/ml
Purification:	Purified from mouse ascites fluids or tissue culture supernatant by affinity chromatography (protein A/G)
Conjugation:	Unconjugated
Storage:	Store at -20°C as received.
Stability:	Stable for 12 months from date of receipt.
Gene Name:	keratin 14
Database Link:	<a href="#">NP_000517</a> <a href="#">Entrez Gene 16664 Mouse</a> <a href="#">Entrez Gene 287701 Rat</a> <a href="#">Entrez Gene 3861 Human</a> <a href="#">P02533</a>
Synonyms:	CK14; EBS3; EBS4; K14; NFJ

[View online »](#)

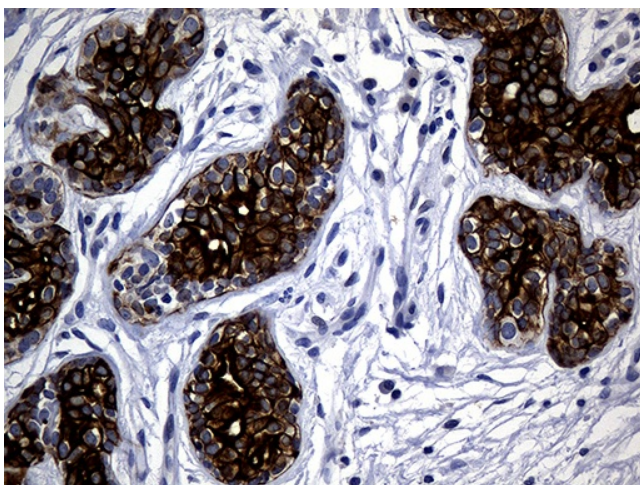
## Product images:



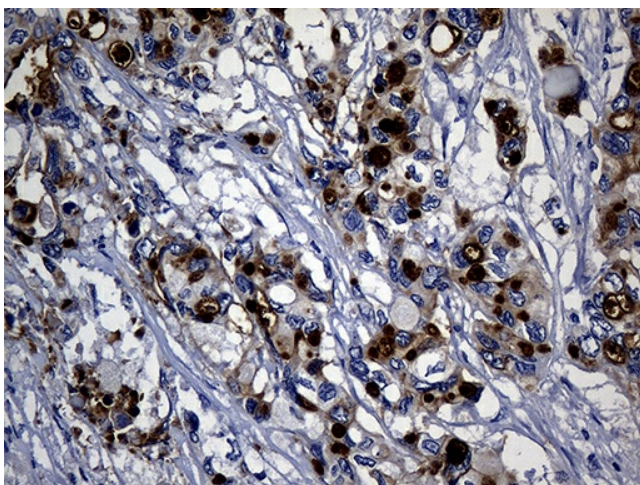
HEK293T cells were transfected with the pCMV6-ENTRY control (Cat# [PS100001], Left lane) or pCMV6-ENTRY KRT14 (Cat# [RC214907], Right lane) cDNA for 48 hrs and lysed. Equivalent amounts of cell lysates (5 ug per lane) were separated by SDS-PAGE and immunoblotted with anti-KRT14 (Cat# [TA803190])(1:500).



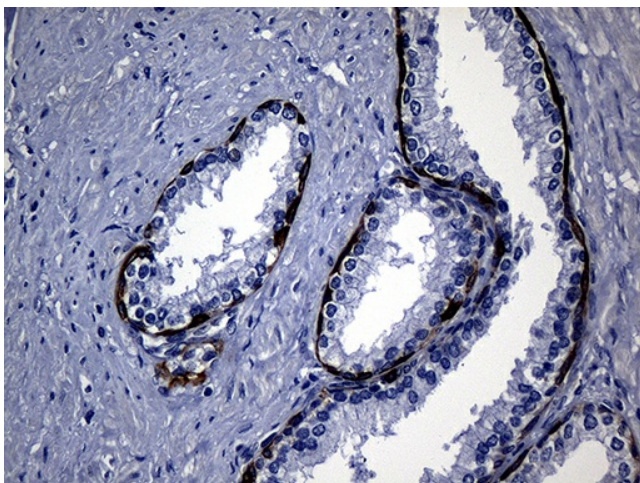
Western blot analysis of extracts (35ug) from A431 cell line by using anti-KRT14 monoclonal antibody (1:500).



Immunohistochemical staining of paraffin-embedded Adenocarcinoma of Human breast tissue using anti-KRT14 mouse monoclonal antibody. Heat-induced epitope retrieval by EDTA solution buffer pH 8.0 at 120°C for 3 min.

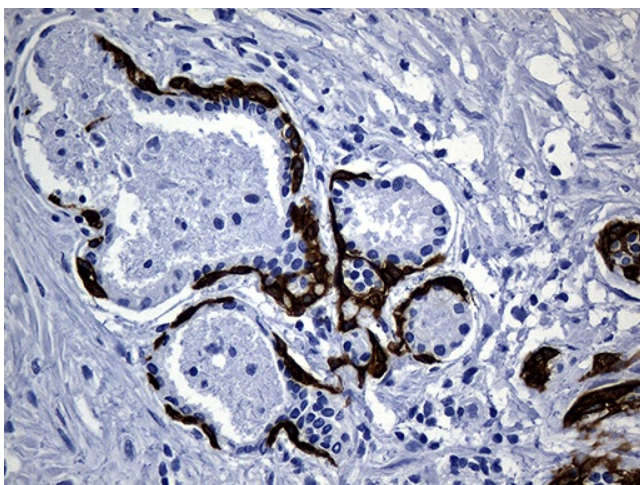


Immunohistochemical staining of paraffin-embedded Carcinoma of Human pancreas tissue using anti-KRT14 mouse monoclonal antibody. Heat-induced epitope retrieval by EDTA solution buffer pH 8.0 at 120°C for 3 min.

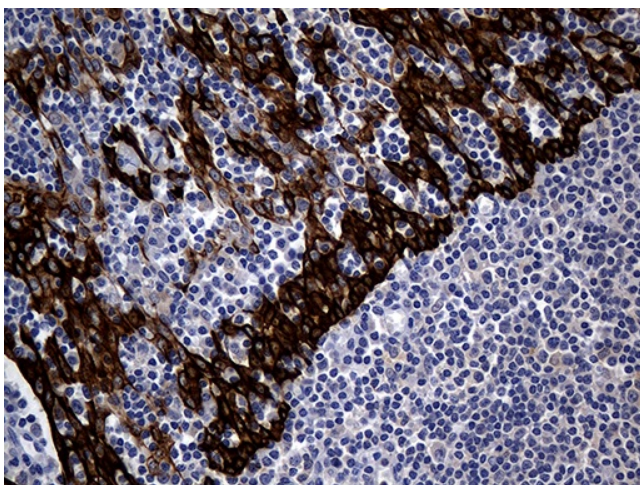


Immunohistochemical staining of paraffin-embedded Human prostate tissue within the normal limits using anti-KRT14 mouse monoclonal antibody. Heat-induced epitope retrieval by EDTA solution buffer pH 8.0 at 120°C for 3 min.





Immunohistochemical staining of paraffin-embedded Carcinoma of Human prostate tissue using anti-KRT14 mouse monoclonal antibody. Heat-induced epitope retrieval by EDTA solution buffer pH 8.0 at 120°C for 3 min.



Immunohistochemical staining of paraffin-embedded Human tonsil within the normal limits using anti-KRT14 mouse monoclonal antibody. Heat-induced epitope retrieval by EDTA solution buffer pH 8.0 at 120°C for 3 min.