

## Product datasheet for **TA803170BM**

### **RIP3 (RIPK3) Mouse Monoclonal Antibody (HRP conjugated) [Clone ID: OTI3A12]**

#### **Product data:**

Product Type:	Primary Antibodies
Clone Name:	OTI3A12
Applications:	WB
Recommended Dilution:	WB 1:2000
Reactivity:	Human
Host:	Mouse
Isotype:	IgG1
Clonality:	Monoclonal
Immunogen:	Human recombinant protein fragment corresponding to amino acids 233-518 of human RIPK3 (NP_006862) produced in E.coli.
Formulation:	PBS (pH 7.3) containing 1% BSA, 50% glycerol.
Concentration:	0.5 mg/ml
Purification:	Purified from mouse ascites fluids or tissue culture supernatant by affinity chromatography (protein A/G)
Conjugation:	HRP
Storage:	Store at -20°C as received.
Stability:	Stable for 12 months from date of receipt.
Predicted Protein Size:	56.7 kDa
Gene Name:	receptor interacting serine/threonine kinase 3
Database Link:	<a href="#">NP_006862</a> <a href="#">Entrez Gene 11035 Human</a> <a href="#">Q9Y572</a>



[View online »](#)

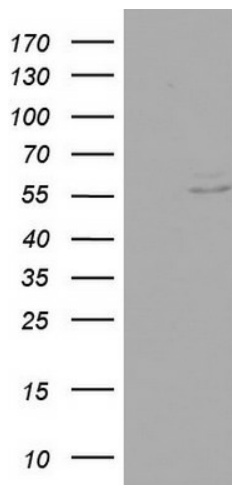
**Background:** The product of this gene is a member of the receptor-interacting protein (RIP) family of serine/threonine protein kinases, and contains a C-terminal domain unique from other RIP family members. The encoded protein is predominantly localized to the cytoplasm, and can undergo nucleocytoplasmic shuttling dependent on novel nuclear localization and export signals. It is a component of the tumor necrosis factor (TNF) receptor-I signaling complex, and can induce apoptosis and weakly activate the NF-kappaB transcription factor. [provided by RefSeq, Jul 2008]

**Synonyms:** RIP3

**Protein Families:** Druggable Genome, Protein Kinase

**Protein Pathways:** Cytosolic DNA-sensing pathway

### Product images:



HEK293T cells were transfected with the pCMV6-ENTRY control (Left lane) or pCMV6-ENTRY RIPK3 ([RC209549], Right lane) cDNA for 48 hrs and lysed. Equivalent amounts of cell lysates (5 ug per lane) were separated by SDS-PAGE and immunoblotted with anti-RIPK3.