

Product datasheet for **TA803158BM**

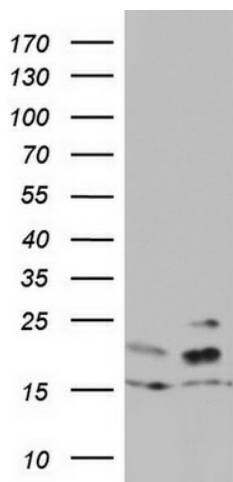
ARL3 Mouse Monoclonal Antibody (HRP conjugated) [Clone ID: OTI3D3]

Product data:

Product Type:	Primary Antibodies
Clone Name:	OTI3D3
Applications:	WB
Recommended Dilution:	WB 1:500
Reactivity:	Human, Mouse, Rat
Host:	Mouse
Isotype:	IgG2a
Clonality:	Monoclonal
Immunogen:	Human recombinant protein fragment corresponding to amino acids 2-182 of human ARL3 (NP_004302) produced in E.coli.
Formulation:	PBS (pH 7.3) containing 1% BSA, 50% glycerol.
Concentration:	0.5 mg/ml
Purification:	Purified from mouse ascites fluids or tissue culture supernatant by affinity chromatography (protein A/G)
Conjugation:	HRP
Storage:	Store at -20°C as received.
Stability:	Stable for 12 months from date of receipt.
Predicted Protein Size:	20.3 kDa
Gene Name:	ADP ribosylation factor like GTPase 3
Database Link:	NP_004302 Entrez Gene 403 Human P36405
Background:	ADP-ribosylation factor-like 3 is a member of the ADP-ribosylation factor family of GTP-binding proteins. ARL3 binds guanine nucleotides but lacks ADP-ribosylation factor activity. [provided by RefSeq, Jul 2008]
Synonyms:	ARFL3
Protein Families:	Druggable Genome



[View online »](#)

Product images:

HEK293T cells were transfected with the pCMV6-ENTRY control (Left lane) or pCMV6-ENTRY ARL3 ([RC203469], Right lane) cDNA for 48 hrs and lysed. Equivalent amounts of cell lysates (5 ug per lane) were separated by SDS-PAGE and immunoblotted with anti-ARL3. Positive lysates [LY418068] (100ug) and [LC418068] (20ug) can be purchased separately from OriGene.