

## Product datasheet for **TA803157S**

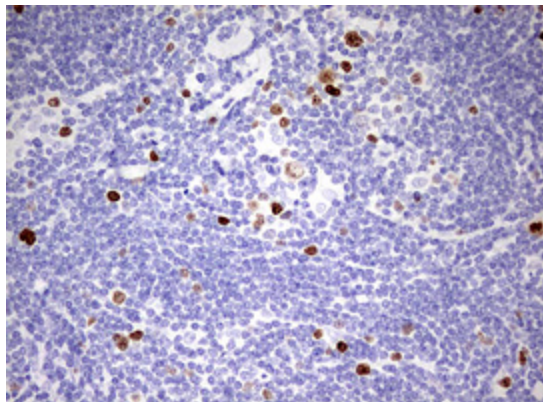
### **Ki67 (MKI67) Mouse Monoclonal Antibody [Clone ID: OTI18G5]**

#### **Product data:**

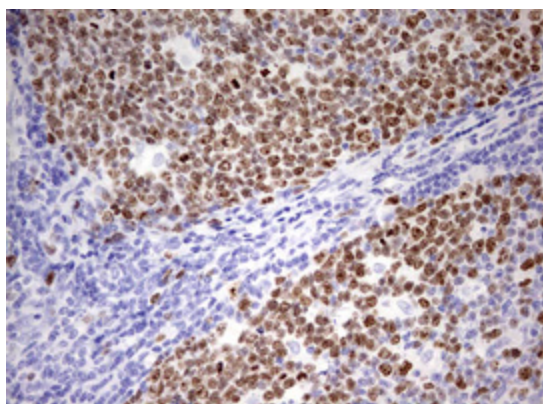
<b>Product Type:</b>	Primary Antibodies
<b>Clone Name:</b>	OTI18G5
<b>Applications:</b>	IHC
<b>Recommended Dilution:</b>	IHC 1:150
<b>Reactivity:</b>	Human
<b>Host:</b>	Mouse
<b>Isotype:</b>	IgG1
<b>Clonality:</b>	Monoclonal
<b>Immunogen:</b>	Human recombinant protein fragment corresponding to amino acids 1160-1493 of human MKI67 (NP_002408) produced in E.coli.
<b>Formulation:</b>	PBS (pH 7.3) containing 1% BSA, 50% glycerol and 0.02% sodium azide.
<b>Concentration:</b>	1 mg/ml
<b>Purification:</b>	Purified from mouse ascites fluids or tissue culture supernatant by affinity chromatography (protein A/G)
<b>Conjugation:</b>	Unconjugated
<b>Storage:</b>	Store at -20°C as received.
<b>Stability:</b>	Stable for 12 months from date of receipt.
<b>Gene Name:</b>	marker of proliferation Ki-67
<b>Database Link:</b>	<a href="#">NP_002408</a> <a href="#">Entrez Gene 4288 Human P46013</a>
<b>Background:</b>	This gene encodes a nuclear protein that is associated with and may be necessary for cellular proliferation. Alternatively spliced transcript variants have been described. A related pseudogene exists on chromosome X. [provided by RefSeq, Mar 2009]
<b>Synonyms:</b>	KIA; MIB-; MIB-1; PPP1R105
<b>Protein Families:</b>	Druggable Genome, ES Cell Differentiation/IPS



[View online »](#)

**Product images:**

Immunohistochemical staining of paraffin-embedded Human Lymphoma tissue using anti-MKI67 mouse monoclonal antibody. (Heat-induced epitope retrieval by 10mM citric buffer, pH6.0, 120°C for 3min, [TA803157])



Immunohistochemical staining of paraffin-embedded Human tonsil within the normal limits using anti-MKI67 mouse monoclonal antibody. (Heat-induced epitope retrieval by 10mM citric buffer, pH6.0, 120°C for 3min, [TA803157])