

Product datasheet for **TA803152S**

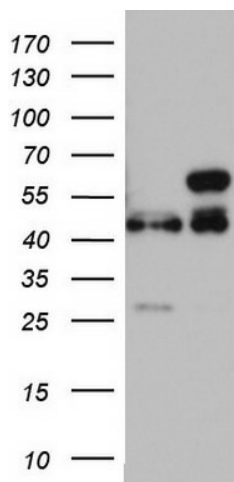
RMND5A Mouse Monoclonal Antibody [Clone ID: OTI3D1]

Product data:

Product Type:	Primary Antibodies
Clone Name:	OTI3D1
Applications:	WB
Recommended Dilution:	WB 1:2000
Reactivity:	Human, Mouse, Rat
Host:	Mouse
Isotype:	IgG2b
Clonality:	Monoclonal
Immunogen:	Human recombinant protein fragment corresponding to amino acids 1-249 of human RMND5A (NP_073617) produced in E.coli.
Formulation:	PBS (pH 7.3) containing 1% BSA, 50% glycerol and 0.02% sodium azide.
Concentration:	1 mg/ml
Purification:	Purified from mouse ascites fluids or tissue culture supernatant by affinity chromatography (protein A/G)
Conjugation:	Unconjugated
Storage:	Store at -20°C as received.
Stability:	Stable for 12 months from date of receipt.
Predicted Protein Size:	43.8 kDa
Gene Name:	required for meiotic nuclear division 5 homolog A
Database Link:	NP_073617 Entrez Gene 64795 Human Q9H871
Synonyms:	CTLH; GID2; GID2A; p44CTLH; RMD5



[View online »](#)

Product images:

HEK293T cells were transfected with the pCMV6-ENTRY control (Left lane) or pCMV6-ENTRY RMND5A ([RC204257], Right lane) cDNA for 48 hrs and lysed. Equivalent amounts of cell lysates (5 ug per lane) were separated by SDS-PAGE and immunoblotted with anti-RMND5A. Positive lysates [LY411569] (100ug) and [LC411569] (20ug) can be purchased separately from OriGene.