

## Product datasheet for **TA803142**

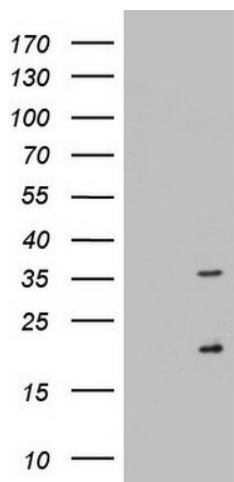
### Nogo B receptor (NUS1) Mouse Monoclonal Antibody [Clone ID: OTI6C11]

#### Product data:

Product Type:	Primary Antibodies
Clone Name:	OTI6C11
Applications:	WB
Recommended Dilution:	WB 1:2000
Reactivity:	Human, Mouse, Rat
Host:	Mouse
Isotype:	IgG1
Clonality:	Monoclonal
Immunogen:	Human recombinant protein fragment corresponding to amino acids 38-116 of human NUS1 (NP_612468) produced in E.coli.
Formulation:	PBS (pH 7.3) containing 1% BSA, 50% glycerol and 0.02% sodium azide.
Concentration:	1 mg/ml
Purification:	Purified from mouse ascites fluids or tissue culture supernatant by affinity chromatography (protein A/G)
Conjugation:	Unconjugated
Storage:	Store at -20°C as received.
Stability:	Stable for 12 months from date of receipt.
Gene Name:	NUS1 dehydrodolichyl diphosphate synthase subunit
Database Link:	<a href="#">NP_612468</a> <a href="#">Entrez Gene 52014 Mouse</a> <a href="#">Entrez Gene 294400 Rat</a> <a href="#">Entrez Gene 116150 Human</a> <a href="#">Q96E22</a>
Synonyms:	C6orf68; CDG1AA; MGC:7199; NgBR; TANGO14



[View online »](#)

**Product images:**

HEK293T cells were transfected with the pCMV6-ENTRY control (Cat# [PS100001], Left lane) or pCMV6-ENTRY NUS1 (Cat# [RC224928], Right lane) cDNA for 48 hrs and lysed. Equivalent amounts of cell lysates (5 ug per lane) were separated by SDS-PAGE and immunoblotted with anti-NUS1 (Cat# TA803142). Positive lysates [LY403360] (100ug) and [LC403360] (20ug) can be purchased separately from OriGene.