

## Product datasheet for **TA803106M**

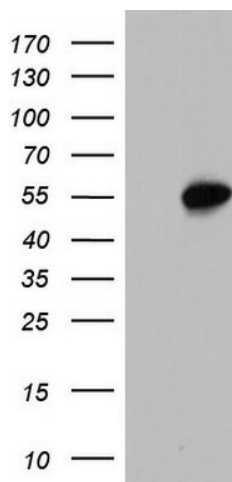
### **SAP30BP Mouse Monoclonal Antibody [Clone ID: OTI6E10]**

#### **Product data:**

Product Type:	Primary Antibodies
Clone Name:	OTI6E10
Applications:	WB
Recommended Dilution:	WB 1:2000
Reactivity:	Human, Mouse, Rat
Host:	Mouse
Isotype:	IgG2a
Clonality:	Monoclonal
Immunogen:	Human recombinant protein fragment corresponding to amino acids 1-260 of human SAP30BP (NP_037392) produced in E.coli.
Formulation:	PBS (pH 7.3) containing 1% BSA, 50% glycerol and 0.02% sodium azide.
Concentration:	1 mg/ml
Purification:	Purified from mouse ascites fluids or tissue culture supernatant by affinity chromatography (protein A/G)
Conjugation:	Unconjugated
Storage:	Store at -20°C as received.
Stability:	Stable for 12 months from date of receipt.
Predicted Protein Size:	33.7 kDa
Gene Name:	SAP30 binding protein
Database Link:	<a href="#">NP_037392</a> <a href="#">Entrez Gene 57230 Mouse</a> <a href="#">Entrez Gene 360662 Rat</a> <a href="#">Entrez Gene 29115 Human</a> <a href="#">Q9UHR5</a>
Synonyms:	HCNGP; HTRG; HTRP


[View online »](#)

## Product images:



HEK293T cells were transfected with the pCMV6-ENTRY control (Left lane) or pCMV6-ENTRY SAP30BP ([RC206462], Right lane) cDNA for 48 hrs and lysed. Equivalent amounts of cell lysates (5 ug per lane) were separated by SDS-PAGE and immunoblotted with anti-SAP30BP. Positive lysates [LY415705] (100ug) and [LC415705] (20ug) can be purchased separately from OriGene.