

## Product datasheet for **TA803087BM**

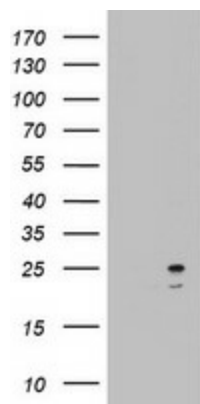
### ARL3 Mouse Monoclonal Antibody (HRP conjugated) [Clone ID: OTI1C6]

#### Product data:

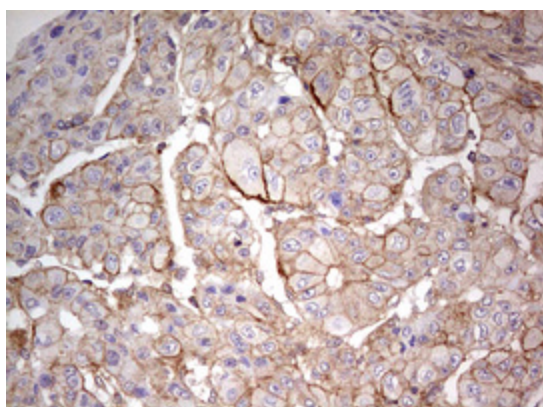
Product Type:	Primary Antibodies
Clone Name:	OTI1C6
Applications:	IHC, WB
Recommended Dilution:	WB 1:2000, IHC 1:150
Reactivity:	Human, Mouse, Rat
Host:	Mouse
Isotype:	IgG2a
Clonality:	Monoclonal
Immunogen:	Human recombinant protein fragment corresponding to amino acids 2-182 of human ARL3 (NP_004302) produced in E.coli.
Formulation:	PBS (pH 7.3) containing 1% BSA, 50% glycerol.
Concentration:	0.5 mg/ml
Purification:	Purified from mouse ascites fluids or tissue culture supernatant by affinity chromatography (protein A/G)
Conjugation:	HRP
Storage:	Store at -20°C as received.
Stability:	Stable for 12 months from date of receipt.
Predicted Protein Size:	20.3 kDa
Gene Name:	ADP ribosylation factor like GTPase 3
Database Link:	<a href="#">NP_004302</a> <a href="#">Entrez Gene 403 Human</a> <a href="#">P36405</a>
Background:	ADP-ribosylation factor-like 3 is a member of the ADP-ribosylation factor family of GTP-binding proteins. ARL3 binds guanine nucleotides but lacks ADP-ribosylation factor activity. [provided by RefSeq, Jul 2008]
Synonyms:	ARFL3
Protein Families:	Druggable Genome



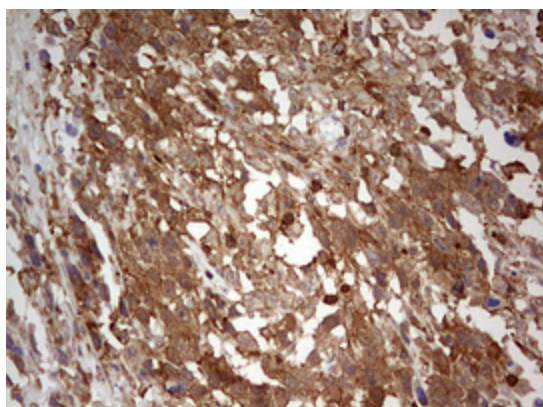
[View online »](#)

**Product images:**

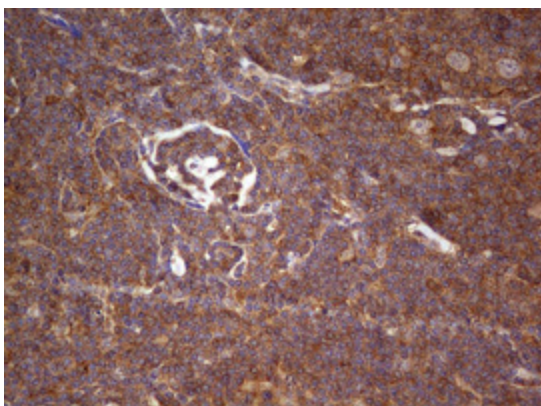
HEK293T cells were transfected with the pCMV6-ENTRY control (Cat# [PS100001], Left lane) or pCMV6-ENTRY ARL3 (Cat# [RC203469], Right lane) cDNA for 48 hrs and lysed. Equivalent amounts of cell lysates (5 ug per lane) were separated by SDS-PAGE and immunoblotted with anti-ARL3 (Cat# [TA803087]). Positive lysates [LY418068] (100ug) and [LC418068] (20ug) can be purchased separately from OriGene.



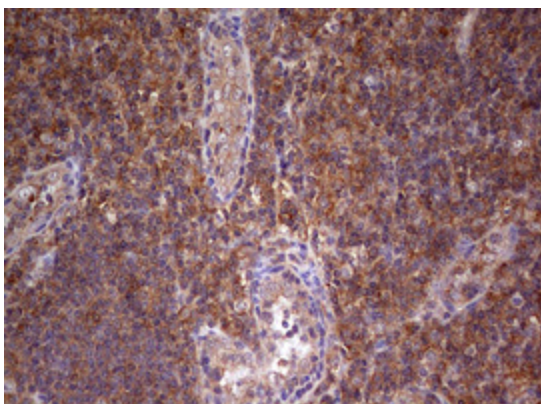
Immunohistochemical staining of paraffin-embedded Carcinoma of Human liver tissue using anti-ARL3 mouse monoclonal antibody. (Heat-induced epitope retrieval by 10mM citric buffer, pH6.0, 120°C for 3min, [TA803087])



Immunohistochemical staining of paraffin-embedded Adenocarcinoma of Human ovary tissue using anti-ARL3 mouse monoclonal antibody. (Heat-induced epitope retrieval by 10mM citric buffer, pH6.0, 120°C for 3min, [TA803087])



Immunohistochemical staining of paraffin-embedded Human lymphoma tissue using anti-ARL3 mouse monoclonal antibody. (Heat-induced epitope retrieval by 10mM citric buffer, pH6.0, 120°C for 3min, [TA803087])



Immunohistochemical staining of paraffin-embedded Human tonsil within the normal limits using anti-ARL3 mouse monoclonal antibody. (Heat-induced epitope retrieval by 10mM citric buffer, pH6.0, 120°C for 3min, [TA803087])