

## Product datasheet for **TA803050S**

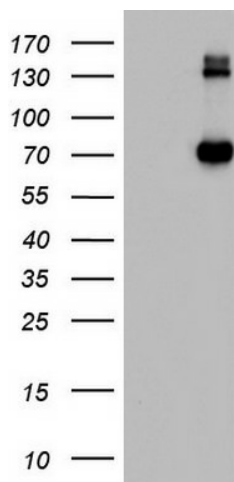
### CD68 Mouse Monoclonal Antibody [Clone ID: OTI12C6]

#### Product data:

Product Type:	Primary Antibodies
Clone Name:	OTI12C6
Applications:	WB
Recommended Dilution:	WB 1:2000
Reactivity:	Human
Host:	Mouse
Isotype:	IgG1
Clonality:	Monoclonal
Immunogen:	Human recombinant protein fragment corresponding to amino acids 22-319 of human CD68 (NP_001242) produced in SF9 cell.
Formulation:	PBS (pH 7.3) containing 1% BSA, 50% glycerol and 0.02% sodium azide.
Concentration:	1 mg/ml
Purification:	Purified from mouse ascites fluids or tissue culture supernatant by affinity chromatography (protein A/G)
Conjugation:	Unconjugated
Storage:	Store at -20°C as received.
Stability:	Stable for 12 months from date of receipt.
Predicted Protein Size:	37.2 kDa
Gene Name:	CD68 molecule
Database Link:	<a href="#">NP_001242</a> <a href="#">Entrez Gene 968 Human</a> <a href="#">P34810</a>
Synonyms:	GP110; LAMP4; SCARD1
Protein Families:	Druggable Genome, Transmembrane
Protein Pathways:	Lysosome



[View online »](#)

**Product images:**

HEK293T cells were transfected with the pCMV6-ENTRY control (Left lane) or pCMV6-ENTRY CD68 ([RC200392], Right lane) cDNA for 48 hrs and lysed. Equivalent amounts of cell lysates (5 ug per lane) were separated by SDS-PAGE and immunoblotted with anti-CD68. Positive lysates [LY420047] (100ug) and [LC420047] (20ug) can be purchased separately from OriGene.