

## Product datasheet for **TA803026BM**

### Cytokeratin 7 (KRT7) Mouse Monoclonal Antibody (HRP conjugated) [Clone ID: OTI1B3]

#### Product data:

Product Type:	Primary Antibodies
Clone Name:	OTI1B3
Applications:	IHC, WB
Recommended Dilution:	WB 1:2000, IHC 1:150
Reactivity:	Human
Host:	Mouse
Isotype:	IgG1
Clonality:	Monoclonal
Immunogen:	Human recombinant protein fragment corresponding to amino acids 1-114 and 340-469 of human KRT7 (NP_005547) produced in E.coli.
Formulation:	PBS (pH 7.3) containing 1% BSA, 50% glycerol.
Concentration:	0.5 mg/ml
Purification:	Purified from mouse ascites fluids or tissue culture supernatant by affinity chromatography (protein A/G)
Conjugation:	HRP
Storage:	Store at -20°C as received.
Stability:	Stable for 12 months from date of receipt.
Predicted Protein Size:	51.2 kDa
Gene Name:	keratin 7
Database Link:	<a href="#">NP_005547</a> <a href="#">Entrez Gene 3855 Human</a> <a href="#">P08729</a>



[View online »](#)

**Background:**

The protein encoded by this gene is a member of the keratin gene family. The type II cytokeratins consist of basic or neutral proteins which are arranged in pairs of heterotypic keratin chains coexpressed during differentiation of simple and stratified epithelial tissues. This type II cytokeratin is specifically expressed in the simple epithelia lining the cavities of the internal organs and in the gland ducts and blood vessels. The genes encoding the type II cytokeratins are clustered in a region of chromosome 12q12-q13. Alternative splicing may result in several transcript variants; however, not all variants have been fully described. [provided by RefSeq, Jul 2008]

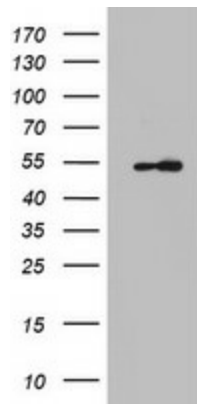
**Synonyms:**

CK7; K2C7; K7; SCL

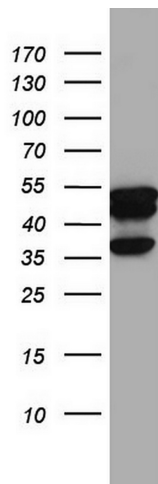
**Protein Families:**

ES Cell Differentiation/IPS

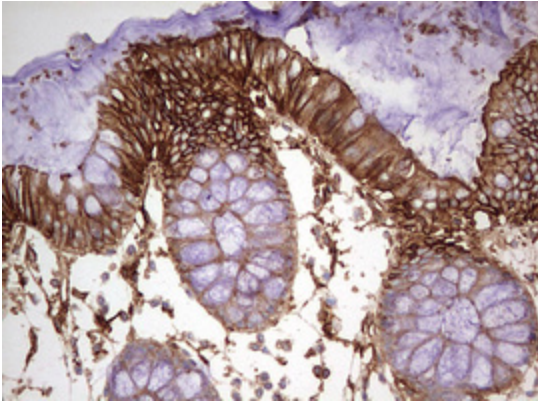
**Product images:**



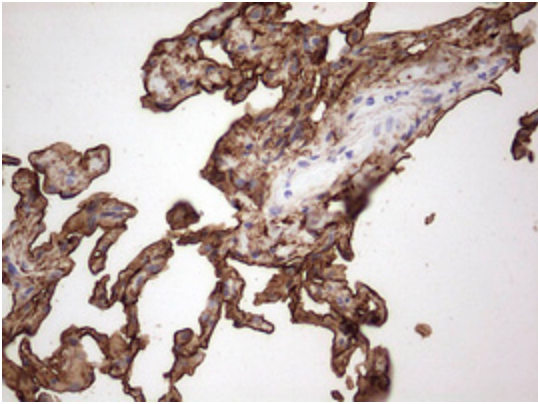
HEK293T cells were transfected with the pCMV6-ENTRY control (Left lane) or pCMV6-ENTRY KRT7 ([RC201124], Right lane) cDNA for 48 hrs and lysed. Equivalent amounts of cell lysates (5 ug per lane) were separated by SDS-PAGE and immunoblotted with anti-KRT7.



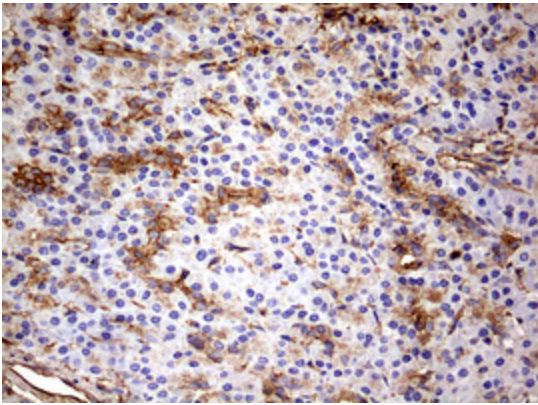
Western blot analysis of A549 cell lysate (35ug) by using anti-KRT7 monoclonal antibody. Dilution: 1:500



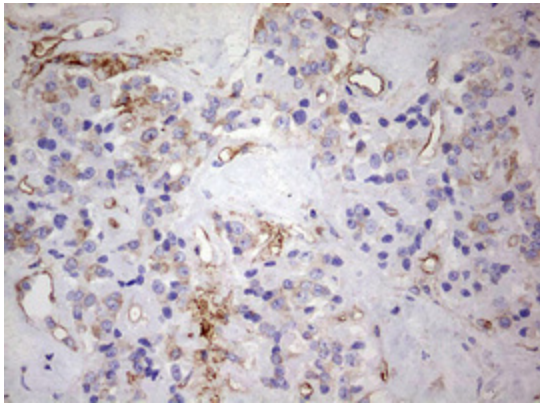
Immunohistochemical staining of paraffin-embedded Human colon tissue within the normal limits using anti-KRT7 mouse monoclonal antibody. (Heat-induced epitope retrieval by 10mM citric buffer, pH6.0, 120°C for 3min, [TA803026])



Immunohistochemical staining of paraffin-embedded Human lung tissue within the normal limits using anti-KRT7 mouse monoclonal antibody. (Heat-induced epitope retrieval by 10mM citric buffer, pH6.0, 120°C for 3min, [TA803026])



Immunohistochemical staining of paraffin-embedded Human pancreas tissue within the normal limits using anti-KRT7 mouse monoclonal antibody. (Heat-induced epitope retrieval by 10mM citric buffer, pH6.0, 120°C for 3min, [TA803026])



Immunohistochemical staining of paraffin-embedded Carcinoma of Human pancreas tissue using anti-KRT7 mouse monoclonal antibody. (Heat-induced epitope retrieval by 10mM citric buffer, pH6.0, 120°C for 3min, [TA803026])