

Product datasheet for **TA803021M**

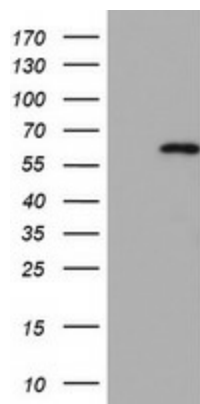
CDCA7L Mouse Monoclonal Antibody [Clone ID: OTI4A2]

Product data:

Product Type:	Primary Antibodies
Clone Name:	OTI4A2
Applications:	WB
Recommended Dilution:	WB 1:2000
Reactivity:	Human
Host:	Mouse
Isotype:	IgG1
Clonality:	Monoclonal
Immunogen:	Human recombinant protein fragment corresponding to amino acids 1-337 of human CDCA7L (NP_061189) produced in E.coli.
Formulation:	PBS (pH 7.3) containing 1% BSA, 50% glycerol and 0.02% sodium azide.
Concentration:	1 mg/ml
Purification:	Purified from mouse ascites fluids or tissue culture supernatant by affinity chromatography (protein A/G)
Conjugation:	Unconjugated
Storage:	Store at -20°C as received.
Stability:	Stable for 12 months from date of receipt.
Predicted Protein Size:	52 kDa
Gene Name:	cell division cycle associated 7 like
Database Link:	NP_061189 Entrez Gene 55536 Human Q96GN5
Synonyms:	JPO2; R1; RAM2

[View online »](#)

Product images:



HEK293T cells were transfected with the pCMV6-ENTRY control (Left lane) or pCMV6-ENTRY CDCA7L ([RC208026], Right lane) cDNA for 48 hrs and lysed. Equivalent amounts of cell lysates (5 ug per lane) were separated by SDS-PAGE and immunoblotted with anti-CDCA7L. Positive lysates [LY412891] (100ug) and [LC412891] (20ug) can be purchased separately from OriGene.