

Product datasheet for **TA803011M**

EZH2 Mouse Monoclonal Antibody [Clone ID: OTI10B10]

Product data:

Product Type:	Primary Antibodies
Clone Name:	OTI10B10
Applications:	IHC, WB
Recommended Dilution:	WB 1:2000, IHC 1:150
Reactivity:	Human, Mouse, Rat
Host:	Mouse
Isotype:	IgG2b
Clonality:	Monoclonal
Immunogen:	Human recombinant protein fragment corresponding to amino acids 182-431 of human EZH2 (NP_004447) produced in E.coli.
Formulation:	PBS (pH 7.3) containing 1% BSA, 50% glycerol and 0.02% sodium azide.
Concentration:	1 mg/ml
Purification:	Purified from mouse ascites fluids or tissue culture supernatant by affinity chromatography (protein A/G)
Conjugation:	Unconjugated
Storage:	Store at -20°C as received.
Stability:	Stable for 12 months from date of receipt.
Predicted Protein Size:	85.8 kDa
Gene Name:	enhancer of zeste 2 polycomb repressive complex 2 subunit
Database Link:	NP_004447 Entrez Gene 14056 Mouse Entrez Gene 312299 Rat Entrez Gene 2146 Human Q15910


[View online »](#)

Background:

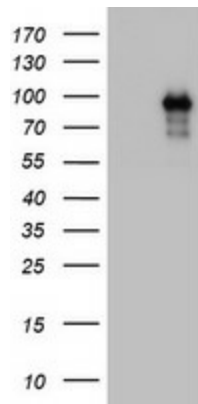
This gene encodes a member of the Polycomb-group (PcG) family. PcG family members form multimeric protein complexes, which are involved in maintaining the transcriptional repressive state of genes over successive cell generations. This protein associates with the embryonic ectoderm development protein, the VAV1 oncoprotein, and the X-linked nuclear protein. This protein may play a role in the hematopoietic and central nervous systems. Multiple alternatively spliced transcript variants encoding distinct isoforms have been identified for this gene. [provided by RefSeq, Feb 2011]

Synonyms:

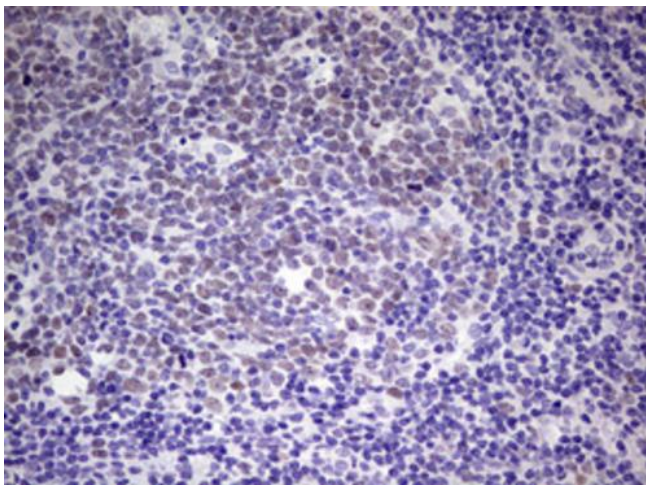
ENX-1; ENX1; EZH1; EZH2b; KMT6; KMT6A; WVS; WVS2

Protein Families:

Druggable Genome, Transcription Factors

Product images:


HEK293T cells were transfected with the pCMV6-ENTRY control (Cat# [PS100001], Left lane) or pCMV6-ENTRY EZH2 (Cat# [RC202054], Right lane) cDNA for 48 hrs and lysed. Equivalent amounts of cell lysates (5 ug per lane) were separated by SDS-PAGE and immunoblotted with anti-EZH2 (Cat# [TA803011]). Positive lysates [LY401416] (100ug) and [LC401416] (20ug) can be purchased separately from OriGene.



Immunohistochemical staining of paraffin-embedded Human lymph node tissue within the normal limits using anti-EZH2 mouse monoclonal antibody. Heat-induced epitope retrieval by EDTA solution buffer pH 8.0 at 120°C for 3 min.