

## Product datasheet for **TA802990M**

### **FGFR1 Mouse Monoclonal Antibody [Clone ID: OT11A3]**

#### **Product data:**

Product Type:	Primary Antibodies
Clone Name:	OT11A3
Applications:	WB
Recommended Dilution:	WB 1:2000
Reactivity:	Human, Mouse, Rat
Host:	Mouse
Isotype:	IgG2b
Clonality:	Monoclonal
Immunogen:	Human recombinant protein fragment corresponding to amino acids 1-376 of human FGFR1 (NP_075598) produced in SF9 cell.
Formulation:	PBS (pH 7.3) containing 1% BSA, 50% glycerol and 0.02% sodium azide.
Concentration:	1 mg/ml
Purification:	Purified from mouse ascites fluids or tissue culture supernatant by affinity chromatography (protein A/G)
Conjugation:	Unconjugated
Storage:	Store at -20°C as received.
Stability:	Stable for 12 months from date of receipt.
Predicted Protein Size:	89.4 kDa
Gene Name:	fibroblast growth factor receptor 1
Database Link:	<a href="#">NP_075598</a> <a href="#">Entrez Gene 14182 Mouse</a> <a href="#">Entrez Gene 79114 Rat</a> <a href="#">Entrez Gene 2260 Human</a> <a href="#">P11362</a>


[View online »](#)

**Background:**

The protein encoded by this gene is a member of the fibroblast growth factor receptor (FGFR) family, where amino acid sequence is highly conserved between members and throughout evolution. FGFR family members differ from one another in their ligand affinities and tissue distribution. A full-length representative protein consists of an extracellular region, composed of three immunoglobulin-like domains, a single hydrophobic membrane-spanning segment and a cytoplasmic tyrosine kinase domain. The extracellular portion of the protein interacts with fibroblast growth factors, setting in motion a cascade of downstream signals, ultimately influencing mitogenesis and differentiation. This particular family member binds both acidic and basic fibroblast growth factors and is involved in limb induction. Mutations in this gene have been associated with Pfeiffer syndrome, Jackson-Weiss syndrome, Antley-Bixler syndrome, osteoglophonic dysplasia, and autosomal dominant Kallmann syndrome 2. Chromosomal aberrations involving this gene are associated with stem cell myeloproliferative disorder and stem cell leukemia lymphoma syndrome. Alternatively spliced variants which encode different protein isoforms have been described; however, not all variants have been fully characterized. [provided by RefSeq, Jul 2008]

**Synonyms:**

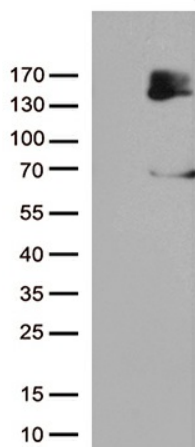
bFGF-R-1; BFGFR; CD331; CEK; ECCL; FGFBR; FGFR-1; FLG; FLT-2; FLT2; HBGFR; HH2; HRTFDS; KAL2; N-SAM

**Protein Families:**

Druggable Genome, Protein Kinase, Transmembrane

**Protein Pathways:**

Adherens junction, MAPK signaling pathway, Melanoma, Pathways in cancer, Prostate cancer, Regulation of actin cytoskeleton

**Product images:**


HEK293T cells were transfected with the pCMV6-ENTRY control (Left lane) or pCMV6-ENTRY FGFR1 ([RC202080], Right lane) cDNA for 48 hrs and lysed. Equivalent amounts of cell lysates (5 ug per lane) were separated by SDS-PAGE and immunoblotted with anti-FGFR1 mouse monoclonal antibody (1:500).