

## Product datasheet for **TA802940S**

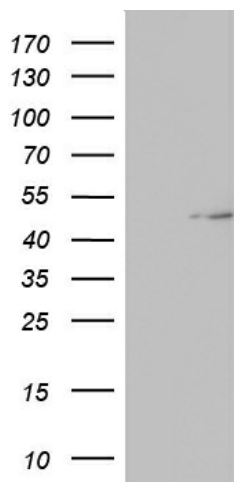
### TIPIN Mouse Monoclonal Antibody [Clone ID: OTI2H6]

#### Product data:

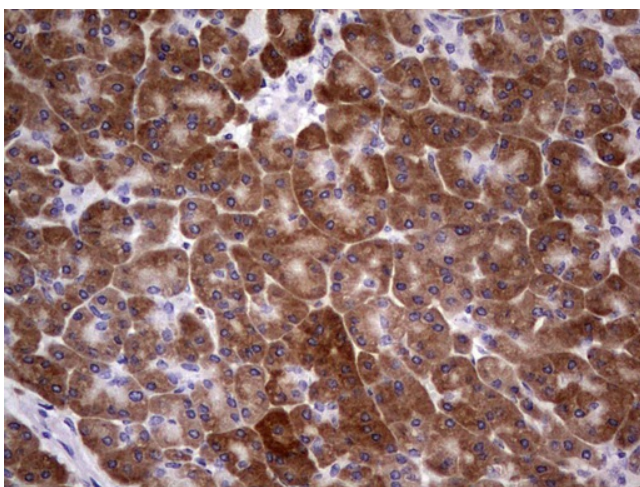
Product Type:	Primary Antibodies
Clone Name:	OTI2H6
Applications:	IHC, WB
Recommended Dilution:	WB 1:2000, IHC 1:150
Reactivity:	Human
Host:	Mouse
Isotype:	IgG2b
Clonality:	Monoclonal
Immunogen:	Full length human recombinant protein of human TIPIN (NP_060328) produced in E.coli.
Formulation:	PBS (pH 7.3) containing 1% BSA, 50% glycerol and 0.02% sodium azide.
Concentration:	1 mg/ml
Purification:	Purified from mouse ascites fluids or tissue culture supernatant by affinity chromatography (protein A/G)
Conjugation:	Unconjugated
Storage:	Store at -20°C as received.
Stability:	Stable for 12 months from date of receipt.
Predicted Protein Size:	34.3 kDa
Gene Name:	TIMELESS interacting protein
Database Link:	<a href="#">NP_060328</a> <a href="#">Entrez Gene 54962 Human</a> <a href="#">Q9BVW5</a>
Synonyms:	FLJ20516
Protein Families:	Druggable Genome



[View online »](#)

**Product images:**

HEK293T cells were transfected with the pCMV6-ENTRY control (Left lane) or pCMV6-ENTRY TIPIN ([RC201502], Right lane) cDNA for 48 hrs and lysed. Equivalent amounts of cell lysates (5 ug per lane) were separated by SDS-PAGE and immunoblotted with anti-TIPIN. Positive lysates [LY402647] (100ug) and [LC402647] (20ug) can be purchased separately from OriGene.



Immunohistochemical staining of paraffin-embedded Human pancreas tissue within the normal limits using anti-TIPIN mouse monoclonal antibody. (Heat-induced epitope retrieval by 1mM EDTA in 10mM Tris, pH8.5, 120°C for 3min, [TA802940])