

Product datasheet for **TA802909BM**

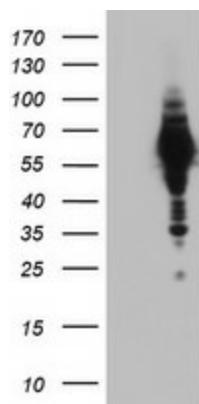
NAB1 Mouse Monoclonal Antibody (HRP conjugated) [Clone ID: OTI1B1]

Product data:

Product Type:	Primary Antibodies
Clone Name:	OTI1B1
Applications:	WB
Recommended Dilution:	WB 1:2000
Reactivity:	Human, Mouse, Rat
Host:	Mouse
Isotype:	IgG1
Clonality:	Monoclonal
Immunogen:	Human recombinant protein fragment corresponding to amino acids 237-487 of human NAB1 (NP_005957) produced in E.coli.
Formulation:	PBS (pH 7.3) containing 1% BSA, 50% glycerol.
Concentration:	0.5 mg/ml
Purification:	Purified from mouse ascites fluids or tissue culture supernatant by affinity chromatography (protein A/G)
Conjugation:	HRP
Storage:	Store at -20°C as received.
Stability:	Stable for 12 months from date of receipt.
Predicted Protein Size:	54.2 kDa
Gene Name:	NGFI-A binding protein 1
Database Link:	NP_005957 Entrez Gene 4664 Human Q13506
Synonyms:	EGR1 binding protein 1; NGFI-A binding protein 1; NGFI-A binding protein 1 (EGR1 binding protein 1)
Protein Families:	Transcription Factors



[View online »](#)

Product images:

HEK293T cells were transfected with the pCMV6-ENTRY control (Left lane) or pCMV6-ENTRY NAB1 ([RC207767], Right lane) cDNA for 48 hrs and lysed. Equivalent amounts of cell lysates (5 ug per lane) were separated by SDS-PAGE and immunoblotted with anti-NAB1. Positive lysates [LY401805] (100ug) and [LC401805] (20ug) can be purchased separately from OriGene.