

## Product datasheet for **TA802900M**

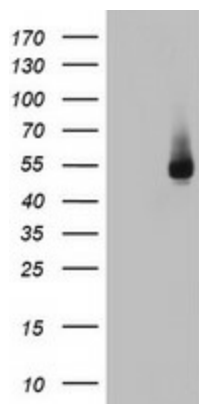
### **HYPE (FICD) Mouse Monoclonal Antibody [Clone ID: OTI11E11]**

#### **Product data:**

Product Type:	Primary Antibodies
Clone Name:	OTI11E11
Applications:	WB
Recommended Dilution:	WB 1:2000
Reactivity:	Human, Mouse, Rat
Host:	Mouse
Isotype:	IgG1
Clonality:	Monoclonal
Immunogen:	Human recombinant protein fragment corresponding to amino acids 61-265 of human FICD (NP_009007) produced in E.coli.
Formulation:	PBS (pH 7.3) containing 1% BSA, 50% glycerol and 0.02% sodium azide.
Concentration:	1 mg/ml
Purification:	Purified from mouse ascites fluids or tissue culture supernatant by affinity chromatography (protein A/G)
Conjugation:	Unconjugated
Storage:	Store at -20°C as received.
Stability:	Stable for 12 months from date of receipt.
Predicted Protein Size:	51.6 kDa
Gene Name:	FIC domain containing
Database Link:	<a href="#">NP_009007</a> <a href="#">Entrez Gene 231630 Mouse</a> <a href="#">Entrez Gene 288741 Rat</a> <a href="#">Entrez Gene 11153 Human</a> <a href="#">Q9BVA6</a>
Synonyms:	HIP13; HYPE; UNQ3041
Protein Families:	Transmembrane


[View online »](#)

## Product images:



HEK293T cells were transfected with the pCMV6-ENTRY control (Left lane) or pCMV6-ENTRY FICD ([RC201725], Right lane) cDNA for 48 hrs and lysed. Equivalent amounts of cell lysates (5 ug per lane) were separated by SDS-PAGE and immunoblotted with anti-FICD. Positive lysates [LY416213] (100ug) and [LC416213] (20ug) can be purchased separately from OriGene.