

Product datasheet for **TA802893AM**

HADHSC (HADH) Mouse Monoclonal Antibody (Biotin conjugated) [Clone ID: OTI3D12]

Product data:

Product Type:	Primary Antibodies
Clone Name:	OTI3D12
Applications:	IHC, WB
Recommended Dilution:	WB 1:2000, IHC 1:150
Reactivity:	Human, Mouse, Rat
Host:	Mouse
Isotype:	IgG2a
Clonality:	Monoclonal
Immunogen:	Human recombinant protein fragment corresponding to amino acids 57-314 of human HADH (NP_005318) produced in E.coli.
Formulation:	PBS (pH 7.3) containing 1% BSA, 50% glycerol and 0.02% sodium azide.
Concentration:	0.5 mg/ml
Purification:	Purified from mouse ascites fluids or tissue culture supernatant by affinity chromatography (protein A/G)
Conjugation:	Biotin
Storage:	Store at -20°C as received.
Stability:	Stable for 12 months from date of receipt.
Predicted Protein Size:	32.8 kDa
Gene Name:	hydroxyacyl-CoA dehydrogenase
Database Link:	NP_005318 Entrez Gene 15107 Mouse Entrez Gene 113965 Rat Entrez Gene 3033 Human Q16836
Background:	This gene is a member of the 3-hydroxyacyl-CoA dehydrogenase gene family. The encoded protein functions in the mitochondrial matrix to catalyze the oxidation of straight-chain 3-hydroxyacyl-CoAs as part of the beta-oxidation pathway. Its enzymatic activity is highest with medium-chain-length fatty acids. Mutations in this gene cause one form of familial hyperinsulinemic hypoglycemia. The human genome contains a related pseudogene of this gene on chromosome 15. [provided by RefSeq, May 2010]

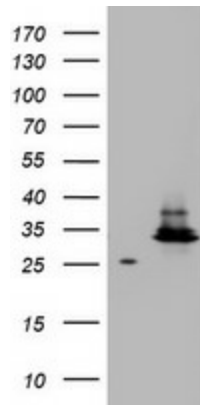


[View online »](#)

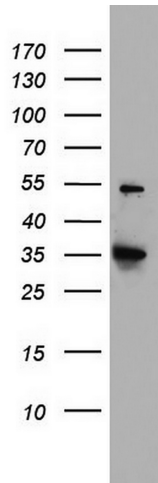
Synonyms: HAD; HADH1; HADHSC; HCDH; HHF4; MSCHAD; SCHAD

Protein Pathways: Butanoate metabolism, Fatty acid elongation in mitochondria, Fatty acid metabolism, Lysine degradation, Metabolic pathways, Tryptophan metabolism, Valine, leucine and isoleucine degradation

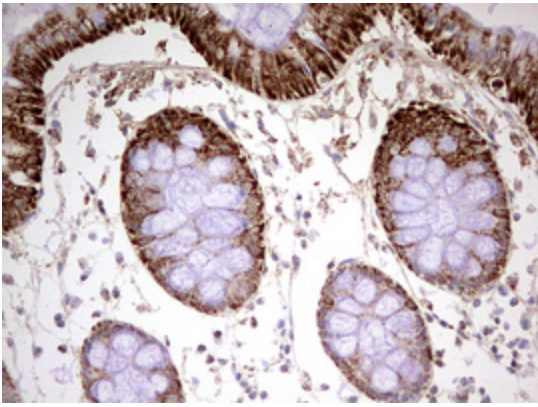
Product images:



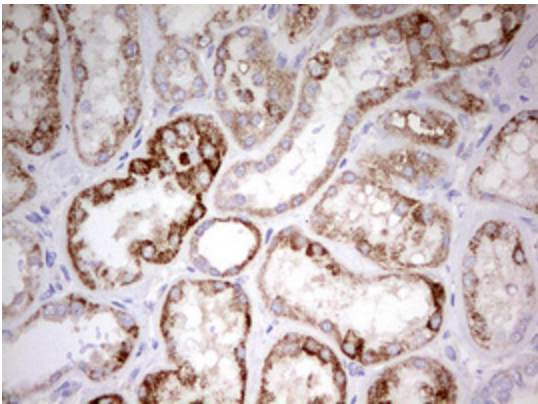
HEK293T cells were transfected with the pCMV6-ENTRY control (Cat# [PS100001], Left lane) or pCMV6-ENTRY HADH (Cat# [RC201752], Right lane) cDNA for 48 hrs and lysed. Equivalent amounts of cell lysates (5 ug per lane) were separated by SDS-PAGE and immunoblotted with anti-HADH(Cat# [TA802893]). Positive lysates [LY401643] (100ug) and [LC401643] (20ug) can be purchased separately from OriGene.



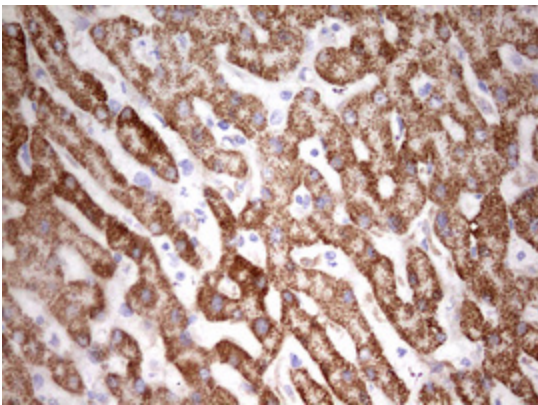
Western blot analysis of HT29 cell lysate (35ug) by using anti-HADH monoclonal antibody. Dilution: 1:500



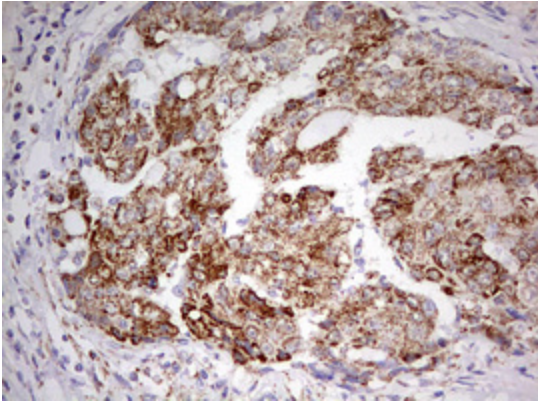
Immunohistochemical staining of paraffin-embedded Human colon tissue within the normal limits using anti-HADH mouse monoclonal antibody. (Heat-induced epitope retrieval by 10mM citric buffer, pH6.0, 120°C for 3min, [TA802893])



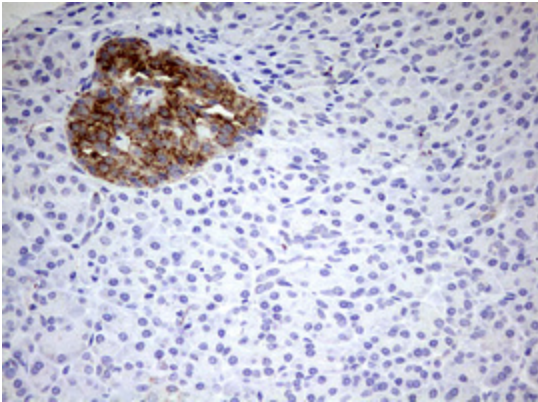
Immunohistochemical staining of paraffin-embedded Human Kidney tissue within the normal limits using anti-HADH mouse monoclonal antibody. (Heat-induced epitope retrieval by 10mM citric buffer, pH6.0, 120°C for 3min, [TA802893])



Immunohistochemical staining of paraffin-embedded Human liver tissue within the normal limits using anti-HADH mouse monoclonal antibody. (Heat-induced epitope retrieval by 10mM citric buffer, pH6.0, 120°C for 3min, [TA802893])



Immunohistochemical staining of paraffin-embedded Carcinoma of Human liver tissue using anti-HADH mouse monoclonal antibody. (Heat-induced epitope retrieval by 10mM citric buffer, pH6.0, 120°C for 3min, [TA802893])



Immunohistochemical staining of paraffin-embedded Human pancreas tissue within the normal limits using anti-HADH mouse monoclonal antibody. (Heat-induced epitope retrieval by 10mM citric buffer, pH6.0, 120°C for 3min, [TA802893])