

## Product datasheet for **TA802888AM**

### **HADHSC (HADH) Mouse Monoclonal Antibody (Biotin conjugated) [Clone ID: OTI1E1]**

#### **Product data:**

<b>Product Type:</b>	Primary Antibodies
<b>Clone Name:</b>	OTI1E1
<b>Applications:</b>	IHC, WB
<b>Recommended Dilution:</b>	WB 1:2000
<b>Reactivity:</b>	Human, Mouse, Rat
<b>Host:</b>	Mouse
<b>Isotype:</b>	IgG2a
<b>Clonality:</b>	Monoclonal
<b>Immunogen:</b>	Human recombinant protein fragment corresponding to amino acids 57-314 of human HADH (NP_005318) produced in E.coli.
<b>Formulation:</b>	PBS (pH 7.3) containing 1% BSA, 50% glycerol and 0.02% sodium azide.
<b>Concentration:</b>	0.5 mg/ml
<b>Purification:</b>	Purified from mouse ascites fluids or tissue culture supernatant by affinity chromatography (protein A/G)
<b>Conjugation:</b>	Biotin
<b>Storage:</b>	Store at -20°C as received.
<b>Stability:</b>	Stable for 12 months from date of receipt.
<b>Predicted Protein Size:</b>	32.8 kDa
<b>Gene Name:</b>	hydroxyacyl-CoA dehydrogenase
<b>Database Link:</b>	<a href="#">NP_005318</a> <a href="#">Entrez Gene 15107 Mouse</a> <a href="#">Entrez Gene 113965 Rat</a> <a href="#">Entrez Gene 3033 Human</a> <a href="#">Q16836</a>
<b>Background:</b>	This gene is a member of the 3-hydroxyacyl-CoA dehydrogenase gene family. The encoded protein functions in the mitochondrial matrix to catalyze the oxidation of straight-chain 3-hydroxyacyl-CoAs as part of the beta-oxidation pathway. Its enzymatic activity is highest with medium-chain-length fatty acids. Mutations in this gene cause one form of familial hyperinsulinemic hypoglycemia. The human genome contains a related pseudogene of this gene on chromosome 15. [provided by RefSeq, May 2010]

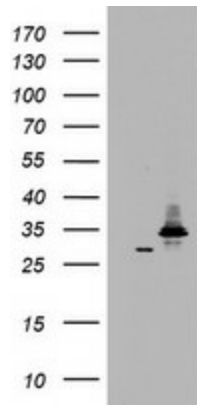


[View online »](#)

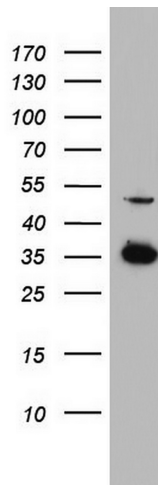
**Synonyms:** HAD; HADH1; HADHSC; HCDH; HHF4; MSCHAD; SCHAD

**Protein Pathways:** Butanoate metabolism, Fatty acid elongation in mitochondria, Fatty acid metabolism, Lysine degradation, Metabolic pathways, Tryptophan metabolism, Valine, leucine and isoleucine degradation

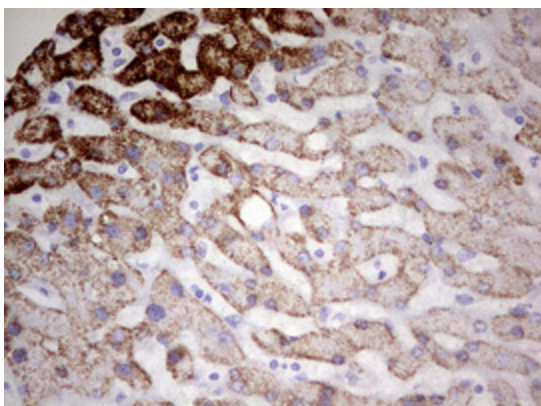
**Product images:**



HEK293T cells were transfected with the pCMV6-ENTRY control (Left lane) or pCMV6-ENTRY HADH ([RC201752], Right lane) cDNA for 48 hrs and lysed. Equivalent amounts of cell lysates (5 ug per lane) were separated by SDS-PAGE and immunoblotted with anti-HADH. Positive lysates [LY401643] (100ug) and [LC401643] (20ug) can be purchased separately from OriGene.



Western blot analysis of HT29 cell lysate (35ug) by using anti-HADH monoclonal antibody. Dilution: 1:500



Immunohistochemical staining of paraffin-embedded Human liver tissue within the normal limits using anti-HADH mouse monoclonal antibody. ([TA802888]) Dilution: 1:150