

Product datasheet for **TA802883S**

FBXW7 Mouse Monoclonal Antibody [Clone ID: OTI4C11]

Product data:

Product Type:	Primary Antibodies
Clone Name:	OTI4C11
Applications:	IHC, WB
Recommended Dilution:	WB 1:2000, IHC 1:150
Reactivity:	Human, Mouse, Rat
Host:	Mouse
Isotype:	IgG2b
Clonality:	Monoclonal
Immunogen:	Human recombinant protein fragment corresponding to amino acids 1-354 of human FBXW7 (NP_361014) produced in E.coli.
Formulation:	PBS (pH 7.3) containing 1% BSA, 50% glycerol and 0.02% sodium azide.
Concentration:	1 mg/ml
Purification:	Purified from mouse ascites fluids or tissue culture supernatant by affinity chromatography (protein A/G)
Conjugation:	Unconjugated
Storage:	Store at -20°C as received.
Stability:	Stable for 12 months from date of receipt.
Predicted Protein Size:	79.5 kDa
Gene Name:	F-box and WD repeat domain containing 7
Database Link:	NP_361014 Entrez Gene 55294 Human Q969H0



[View online »](#)

Background:

This gene encodes a member of the F-box protein family which is characterized by an approximately 40 amino acid motif, the F-box. The F-box proteins constitute one of the four subunits of ubiquitin protein ligase complex called SCFs (SKP1-cullin-F-box), which function in phosphorylation-dependent ubiquitination. The F-box proteins are divided into 3 classes: Fbws containing WD-40 domains, Fbls containing leucine-rich repeats, and Fbxs containing either different protein-protein interaction modules or no recognizable motifs. The protein encoded by this gene was previously referred to as FBX30, and belongs to the Fbws class; in addition to an F-box, this protein contains 7 tandem WD40 repeats. This protein binds directly to cyclin E and probably targets cyclin E for ubiquitin-mediated degradation. Mutations in this gene are detected in ovarian and breast cancer cell lines, implicating the gene's potential role in the pathogenesis of human cancers. Multiple transcript variants encoding different isoforms have been found for this gene. [provided by RefSeq, Mar 2012]

Synonyms:

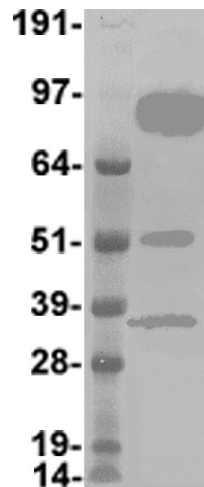
AGO; CDC4; FBW6; FBW7; FBX30; FBXO30; FBXW6; hAgo; hCdc4; SEL-10; SEL10

Protein Families:

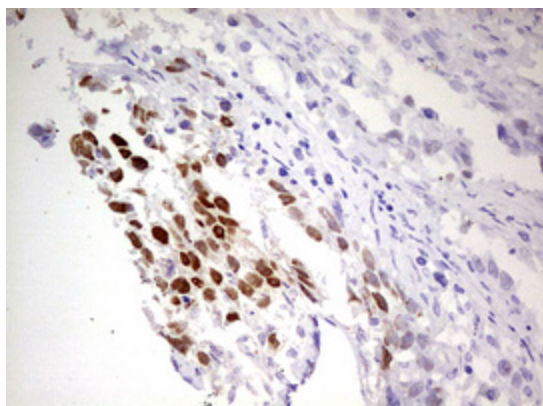
Druggable Genome, Transmembrane

Protein Pathways:

Ubiquitin mediated proteolysis

Product images:

HEK293T cells were transfected with the pCMV6-Entry FBXW7 ([RC217398]) cDNA for 48 hrs and lysed. 5 ug of cell lysate was separated by SDS-PAGE and immunoblotted with anti-FBXW7 ([TA802883]). Positive lysates [LY403254] (100ug) and [LC403254] (20ug) can be purchased separately from OriGene.



Immunohistochemical staining of paraffin-embedded Adenocarcinoma of Human ovary tissue using anti-FBXW7 mouse monoclonal antibody. (Heat-induced epitope retrieval by 10mM citric buffer, pH6.0, 120°C for 3min, [TA802883])