

Product datasheet for **TA802871**

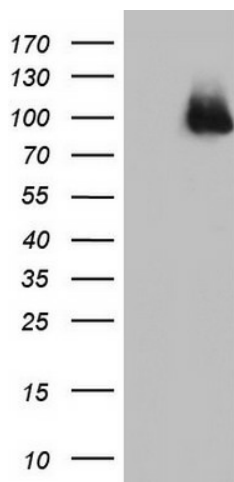
FBXW7 Mouse Monoclonal Antibody [Clone ID: OTI10B9]

Product data:

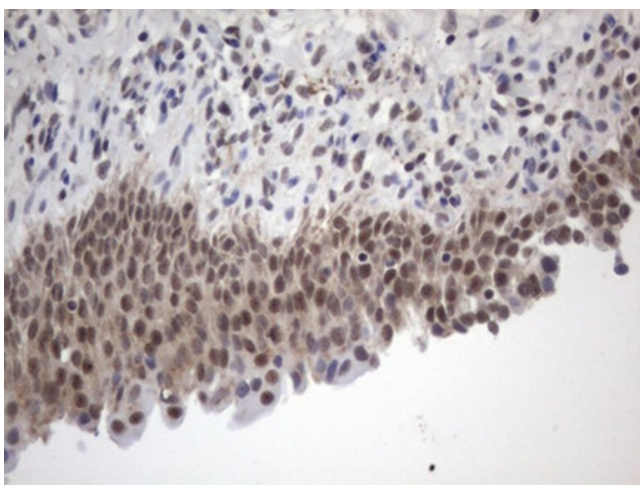
Product Type:	Primary Antibodies
Clone Name:	OTI10B9
Applications:	IHC, WB
Recommended Dilution:	WB 1:2000, IHC 1:150
Reactivity:	Human, Mouse, Rat
Host:	Mouse
Isotype:	IgG2a
Clonality:	Monoclonal
Immunogen:	Human recombinant protein fragment corresponding to amino acids 1-354 of human FBXW7 (NP_361014) produced in E.coli.
Formulation:	PBS (pH 7.3) containing 1% BSA, 50% glycerol and 0.02% sodium azide.
Concentration:	1 mg/ml
Purification:	Purified from mouse ascites fluids or tissue culture supernatant by affinity chromatography (protein A/G)
Conjugation:	Unconjugated
Storage:	Store at -20°C as received.
Stability:	Stable for 12 months from date of receipt.
Predicted Protein Size:	79.5 kDa
Gene Name:	F-box and WD repeat domain containing 7
Database Link:	NP_361014 Entrez Gene 55294 Human Q969H0
Synonyms:	AGO; CDC4; FBW6; FBW7; FBX30; FBXO30; FBXW6; hAgo; hCdc4; SEL-10; SEL10
Protein Families:	Druggable Genome, Transmembrane
Protein Pathways:	Ubiquitin mediated proteolysis



[View online »](#)

Product images:

HEK293T cells were transfected with the pCMV6-ENTRY control (Left lane) or pCMV6-ENTRY FBXW7 ([RC217398], Right lane) cDNA for 48 hrs and lysed. Equivalent amounts of cell lysates (5 ug per lane) were separated by SDS-PAGE and immunoblotted with anti-FBXW7. Positive lysates [LY403254] (100ug) and [LC403254] (20ug) can be purchased separately from OriGene.



Immunohistochemical staining of paraffin-embedded Human bladder tissue within the normal limits using anti-FBXW7 mouse monoclonal antibody. (Heat-induced epitope retrieval by 1mM EDTA in 10mM Tris, pH8.5, 120°C for 3min, TA802871)