

Product datasheet for **TA802861BM**

MRPS11 Mouse Monoclonal Antibody (HRP conjugated) [Clone ID: OTI2E9]

Product data:

Product Type:	Primary Antibodies
Clone Name:	OTI2E9
Applications:	IHC, WB
Recommended Dilution:	WB 1:2000
Reactivity:	Human
Host:	Mouse
Isotype:	IgG1
Clonality:	Monoclonal
Immunogen:	Full length human recombinant protein of human MRPS11 (NP_073750) produced in E.coli.
Formulation:	PBS (pH 7.3) containing 1% BSA, 50% glycerol.
Concentration:	0.5 mg/ml
Purification:	Purified from mouse ascites fluids or tissue culture supernatant by affinity chromatography (protein A/G)
Conjugation:	HRP
Storage:	Store at -20°C as received.
Stability:	Stable for 12 months from date of receipt.
Predicted Protein Size:	20.4 kDa
Gene Name:	mitochondrial ribosomal protein S11
Database Link:	NP_073750 Entrez Gene 64963 Human P82912



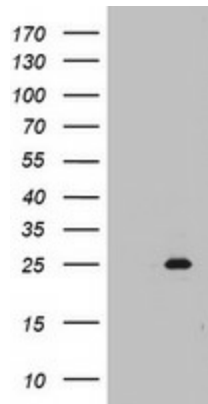
[View online »](#)

Background:

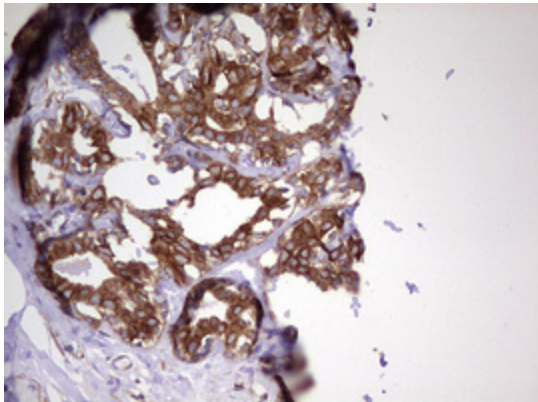
Mammalian mitochondrial ribosomal proteins are encoded by nuclear genes and help in protein synthesis within the mitochondrion. Mitochondrial ribosomes (mitoribosomes) consist of a small 28S subunit and a large 39S subunit. They have an estimated 75% protein to rRNA composition compared to prokaryotic ribosomes, where this ratio is reversed. Another difference between mammalian mitoribosomes and prokaryotic ribosomes is that the latter contain a 5S rRNA. Among different species, the proteins comprising the mitoribosome differ greatly in sequence, and sometimes in biochemical properties, which prevents easy recognition by sequence homology. This gene encodes a 28S subunit protein that contains a high level of sequence similarity with ribosomal protein S11P family members. A pseudogene corresponding to this gene is found on chromosome 20. Sequence analysis identified two transcript variants that encode different protein isoforms. [provided by RefSeq, Jul

Synonyms:

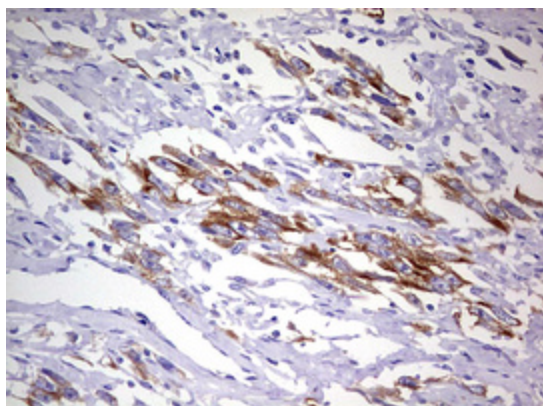
HCC-2

Product images:

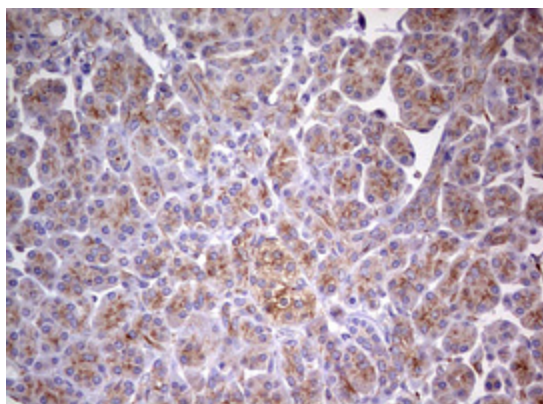
HEK293T cells were transfected with the pCMV6-ENTRY control (Cat# [PS100001], Left lane) or pCMV6-ENTRY MRPS11 (Cat# [RC207075], Right lane) cDNA for 48 hrs and lysed. Equivalent amounts of cell lysates (5 ug per lane) were separated by SDS-PAGE and immunoblotted with anti-MRPS11 (Cat# [TA802861]). Positive lysates [LY411534] (100ug) and [LC411534] (20ug) can be purchased separately from OriGene.



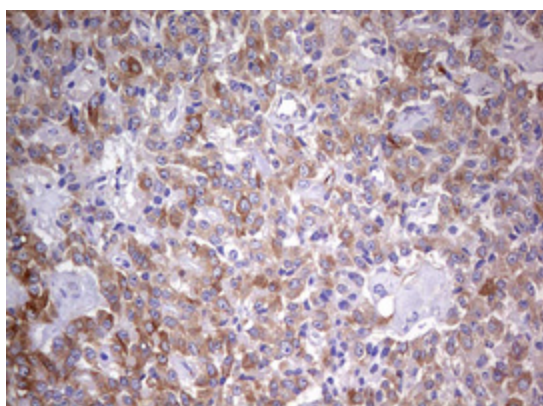
Immunohistochemical staining of paraffin-embedded Human breast tissue within the normal limits using anti-MRPS11 mouse monoclonal antibody. ([TA802861]) Dilution: 1:150



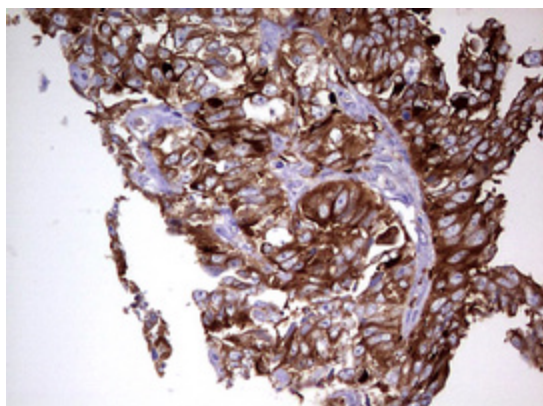
Immunohistochemical staining of paraffin-embedded Adenocarcinoma of Human ovary tissue using anti-MRPS11 mouse monoclonal antibody. ([TA802861]) Dilution: 1:150



Immunohistochemical staining of paraffin-embedded Human pancreas tissue within the normal limits using anti-MRPS11 mouse monoclonal antibody. ([TA802861]) Dilution: 1:150



Immunohistochemical staining of paraffin-embedded Carcinoma of Human pancreas tissue using anti-MRPS11 mouse monoclonal antibody. ([TA802861]) Dilution: 1:150



Immunohistochemical staining of paraffin-embedded Adenocarcinoma of Human endometrium tissue using anti-MRPS11 mouse monoclonal antibody. ([TA802861]) Dilution: 1:150