

## Product datasheet for **TA802813BM**

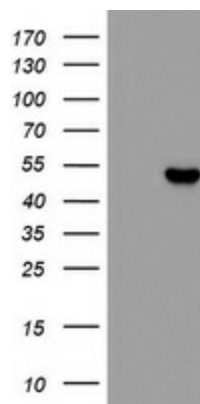
### **CSNK1G2 Mouse Monoclonal Antibody (HRP conjugated) [Clone ID: OTI1A9]**

#### **Product data:**

Product Type:	Primary Antibodies
Clone Name:	OTI1A9
Applications:	WB
Recommended Dilution:	WB 1:2000
Reactivity:	Human, Mouse, Rat
Host:	Mouse
Isotype:	IgG1
Clonality:	Monoclonal
Immunogen:	Human recombinant protein fragment corresponding to amino acids 163-415 of human CSNK1G2 (NP_001310) produced in E.coli.
Formulation:	PBS (pH 7.3) containing 1% BSA, 50% glycerol.
Concentration:	0.5 mg/ml
Purification:	Purified from mouse ascites fluids or tissue culture supernatant by affinity chromatography (protein A/G)
Conjugation:	HRP
Storage:	Store at -20°C as received.
Stability:	Stable for 12 months from date of receipt.
Predicted Protein Size:	47.3 kDa
Gene Name:	casein kinase 1 gamma 2
Database Link:	<a href="#">NP_001310</a> <a href="#">Entrez Gene 65278 Rat</a> <a href="#">Entrez Gene 103236 Mouse</a> <a href="#">Entrez Gene 1455 Human</a> <a href="#">P78368</a>
Synonyms:	CK1g2
Protein Families:	Druggable Genome, Protein Kinase
Protein Pathways:	Hedgehog signaling pathway



[View online »](#)

**Product images:**

HEK293T cells were transfected with the pCMV6-ENTRY control (Left lane) or pCMV6-ENTRY CSNK1G2 ([RC202145], Right lane) cDNA for 48 hrs and lysed. Equivalent amounts of cell lysates (5 ug per lane) were separated by SDS-PAGE and immunoblotted with anti-CSNK1G2. Positive lysates [LY400524] (100ug) and [LC400524] (20ug) can be purchased separately from OriGene.