

## Product datasheet for **TA802792M**

### **TIF1 alpha (TRIM24) Mouse Monoclonal Antibody [Clone ID: OT11D1]**

#### **Product data:**

Product Type:	Primary Antibodies
Clone Name:	OT11D1
Applications:	WB
Recommended Dilution:	WB 1:2000
Reactivity:	Human, Mouse
Host:	Mouse
Isotype:	IgG1
Clonality:	Monoclonal
Immunogen:	Human recombinant protein fragment corresponding to amino acids 706-1016 of human TRIM24 (NP_003843) produced in E.coli.
Formulation:	PBS (pH 7.3) containing 1% BSA, 50% glycerol and 0.02% sodium azide.
Concentration:	1 mg/ml
Purification:	Purified from mouse ascites fluids or tissue culture supernatant by affinity chromatography (protein A/G)
Conjugation:	Unconjugated
Storage:	Store at -20°C as received.
Stability:	Stable for 12 months from date of receipt.
Gene Name:	tripartite motif containing 24
Database Link:	<a href="#">NP_003843</a> <a href="#">Entrez Gene 21848 Mouse</a> <a href="#">Entrez Gene 8805 Human</a> <a href="#">O15164</a>

[View online »](#)

**Background:**

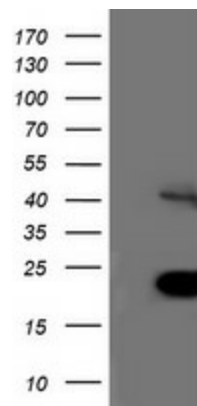
The protein encoded by this gene mediates transcriptional control by interaction with the activation function 2 (AF2) region of several nuclear receptors, including the estrogen, retinoic acid, and vitamin D3 receptors. The protein localizes to nuclear bodies and is thought to associate with chromatin and heterochromatin-associated factors. The protein is a member of the tripartite motif (TRIM) family. The TRIM motif includes three zinc-binding domains - a RING, a B-box type 1 and a B-box type 2 - and a coiled-coil region. Two alternatively spliced transcript variants encoding different isoforms have been described for this gene. [provided by RefSeq, Jul 2008]

**Synonyms:**

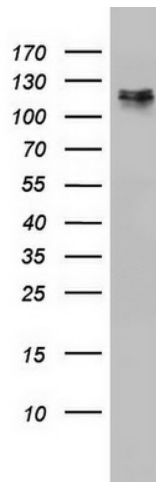
hTIF1; PTC6; RNF82; TF1A; TIF1; TIF1A; TIF1ALPHA

**Protein Families:**

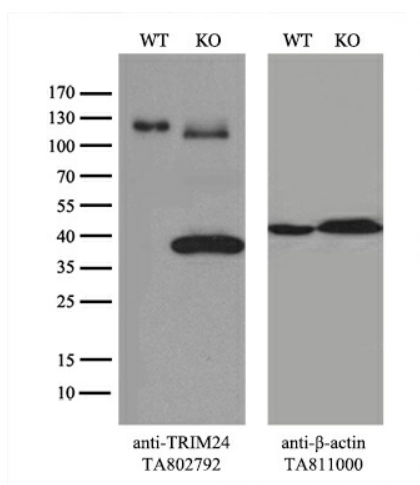
Druggable Genome, Protein Kinase, Transcription Factors

**Product images:**


E.coli lysate cells lysate (5 ug, left lane) and E.coli cells lysate expressing Human recombinant protein fragment corresponding to amino acids 706-1016 of human TRIM24 (NP\_003843) were separated by SDS-PAGE and immunoblotted with anti-TRIM24.



Western blot analysis of HT29 cell lysate (35ug) by using anti-TRIM24 monoclonal antibody. Dilution: 1:500



Equivalent amounts of cell lysates (10 ug per lane) of wild-type HeLa cells (WT, Cat# LC810HELA) and TRIM24-Knockout HeLa cells (KO, Cat# [LC810278]) were separated by SDS-PAGE and immunoblotted with anti-TRIM24 monoclonal antibody [TA802792], (1:500). Then the blotted membrane was stripped and reprobed with anti-β-actin antibody ([TA811000]) as a loading control.